

Cross Technologies, Inc.

Ethernet Option Descriptions

Overview: Cross Technologies Ethernet M&C Interfaces.

Cross Technologies, Inc. currently offers three (3) different Ethernet Options; Options W8, W18 and W28. Below is a brief description of each of these three (3) Ethernet interfaces.

Option W8, provides a Web Browser Interface ONLY. Upon connection, initiate a web browser session and enter the IP Address (DEFAULT IP Address is **192.168.123.2** [You will be able to change the IP address, but that is not discussed in this document.]) You will be presented a Sign-In page, the Configuration Manager Screen and finally the Cross Technologies Product Setup Webpage, see below [Figure 1-C: Example Webpage](#) below.

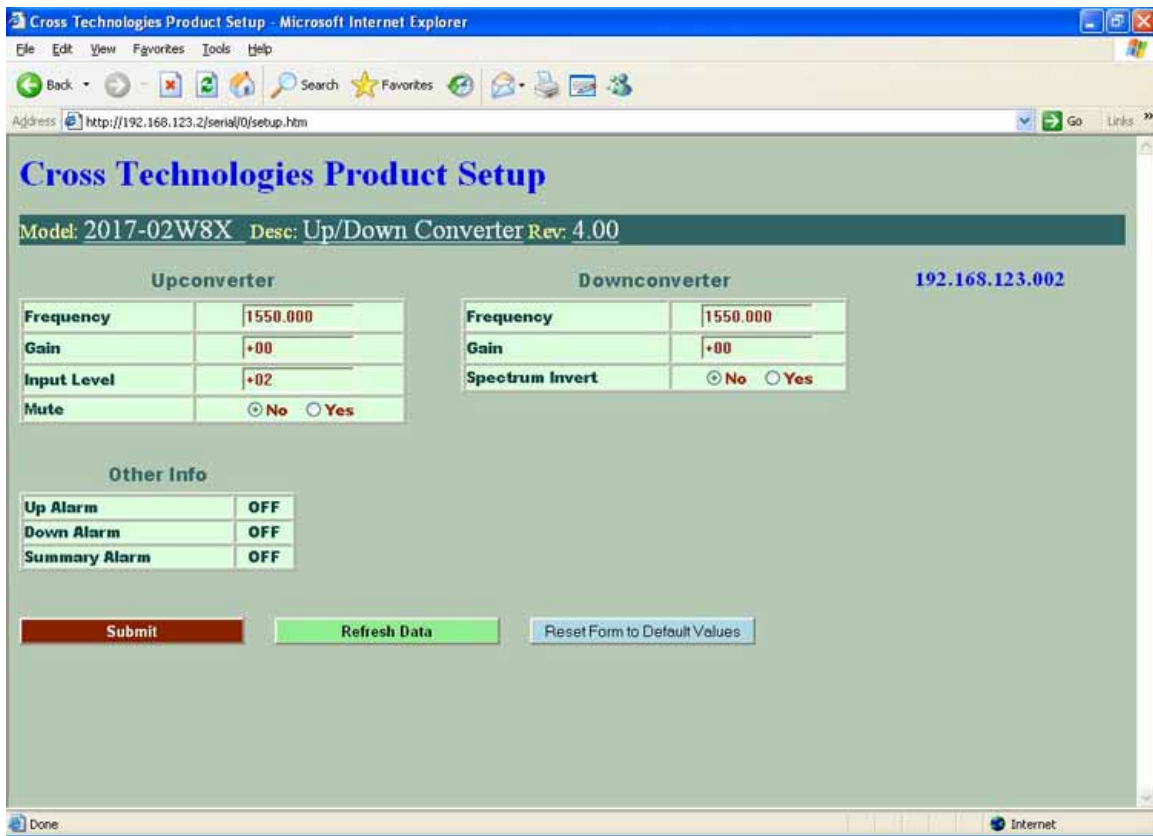


Figure 1-C Example Webpage

You would simply enter the 'variable' information in the appropriate fields, and then click the Submit button.

Option W18, SNMP and Web Browser Interface. In addition to Web Browser Interface discussed previously in the W8 interface above, Option W18 provides an SNMP Interface along with an SNMP MIB that is to be loaded into your SNMP Network Management System. Upon connection, you will initiate a Telenet Session to port 9999 via Hyper Terminal or some other appropriate Terminal Emulation program. Figure 1-E Telenet Settings in Hyper Terminal below provides an example of the required settings to access the SNMP configuration menu.



Figure 1-E Telnet® Settings in Hyper Terminal

Once the *Telnet*® connection is established you will be prompted to “Press Enter for Setup Mode”. Press enter and a menu of device server configuration options will appear (see [Figure 2-F: Device Server Configuration Menu.](#)) Select menu item 3, “SNMP configuration.”

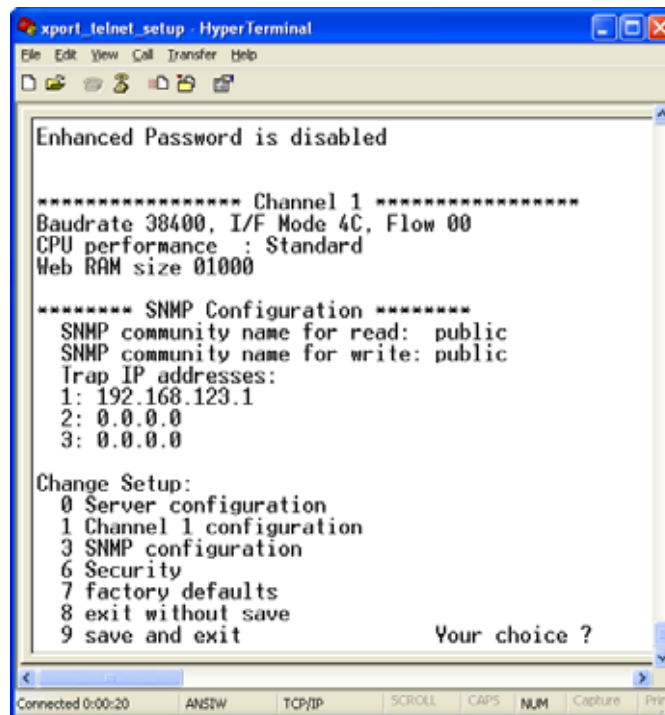


Figure 2-F: Device Server Configuration Menu

[From this point on, you will follow your SNMP Network Administrators protocol for adding units to your SNMP Network.]

Option W28, provides a direct, TCP/IP Interface ONLY. Upon connection, you will initiate a *Telnet*® Session to port 10001 via Hyper Terminal or some other appropriate Terminal Emulation program. [See Figure 1-E above, but it would have 10001 in the Port Number field.]

Once the connection is established you can monitor and control your product with standard M&C Configuration or Status commands as described **in your specific product's manual**. All commands begin with the open bracket character “{” and end with the close bracket character “}”.