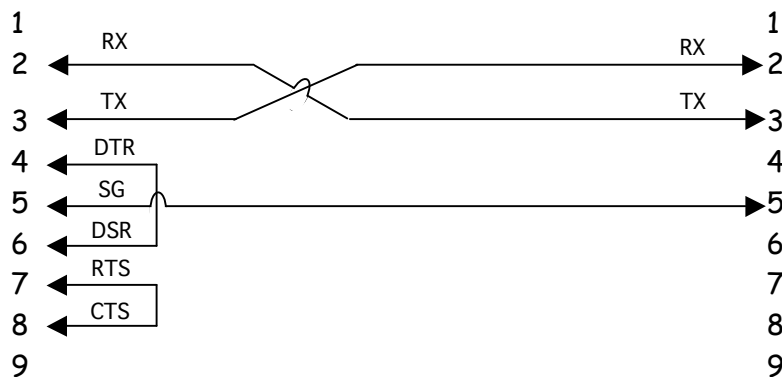




**AN-200901 - M&C Cable for Cross Technologies Frequency Converters**

Female DB-9  
PC Com Port

Male DB-9  
2015/16/17 M&C Port



It's a little more complicated than a 'basic Crossover' (2-3, 3-2 (TX-RX)) with Signal Ground (pins 5-5) cable. On the PC Terminal side PINS 4 & 6 (DTR-DSR) need to be jumpered together and PINS 7 & 8 (RTS-CTS) also need to be jumpered together.