

Instruction Manual

Model 4116-T21-181 Multi-Band, Block Translator Weatherized Unit

September 2018, Rev. 0



Data, drawings, and other material contained herein are proprietary to Cross Technologies, Inc., but may be reproduced or duplicated without the prior permission of Cross Technologies, Inc. for purposes of operating the equipment. Printed in USA.

When ordering parts from Cross Technologies, Inc., be sure to include the equipment model number, equipment serial number, and a description of the part.



6170 Shiloh Road

Alpharetta, Georgia 30005

(770) 886-8005 • FAX (770) 886-7964 • Toll Free 888-900-5588

WEB www.crosstechnologies.com

E-MAIL info@crosstechnologies.com

INSTRUCTION MANUAL

MODEL 4116-T21-181 Multi-Band Block Translator, Weather Resistant*

<u>TABLE OF CONTENTS</u>	<u>PAGE</u>
Warranty	2
1.0 General	3
1.1 Equipment Description	3
1.2 Technical Characteristics	4
2.0 Installation	6
2.1 Message Protocol	6
2.2 M&C Commands	7
2.3 M&C Queries	8
2.4 Ethernet Interface Installation	10
2.4.1 Methods of Connection	10
2.4.2 Ethernet Configuration	10
2.4.3 Webpage M&C	12
2.4.4 SNMP Configuration	12
2.5 Downconverter Outline Drawings	15
2.6 Physical Interface	16
2.7 Installation/Operation	17

WARRANTY - The following warranty applies to all Cross Technologies, Inc. products.

All Cross Technologies, Inc. products are warranted against defective materials and workmanship for a period of one year after shipment to customer. Cross Technologies, Inc.'s obligation under this warranty is limited to repairing or, at Cross Technologies, Inc.'s option, replacing parts, sub-assemblies, or entire assemblies. Cross Technologies, Inc. shall not be liable for any special, indirect, or consequential damages. This warranty does not cover parts or equipment which have been subject to misuse, negligence, or accident by the customer during use. All shipping costs for warranty repairs will be prepaid by the customer. There are not other warranties, express or implied, except as stated herein.



6170 Shiloh Road

Alpharetta, Georgia 30005

(770) 886-8005 • FAX (770) 886-7964 • Toll Free 888-900-5588

WEB www.crosstechnologies.com • E-MAIL info@crosstechnologies.com

MODEL 4116-T21-181 Multi-Band, Block Translator, Weather Resistant*

1.0 General

1.1 Equipment Description

The 4116-T21-181 Translator converts a 17.3 - 18.1 GHz input RF band to one of two output RF bands, 11.7 to 12.5 or 10.7 to 11.5 GHz. Front panel LEDs provide indication of DC Power, and PLL Alarm. The RF to RF gain is -20 dB, maximum. Connectors are Type N female for the RF out, RF in and RF in Monitor and SMA female for the external reference input and reference output. Gain, band select, and internal 10 MHz frequency are controlled by the Ethernet M&C or via the Status/Control connector (RS232C). In AUTO, the 10 MHz reference stays in external if the external level is in the +2 to +8 dBm range. The 4116 is powered by a 100-240 \pm 10% VAC power supply, and mounted in a 8" W X 6" H X 16" D Weather Resistant* enclosure.

NOTE: *Weather Resistant enclosures are designed to be water resistant for installation in an outdoor enclosure/antenna hut OR mounted outdoors on an antenna assembly at their specified temperature ranges. They are designed to be located "out in the elements" (water, sleet, snow, etc.) but they are *not* designed to be "submerged under water". If an extended temperature range is required, there is an **Extended Temperature** option (**Option W21**; -30°C to +60°C) available at an additional cost. Contact Cross for quote.

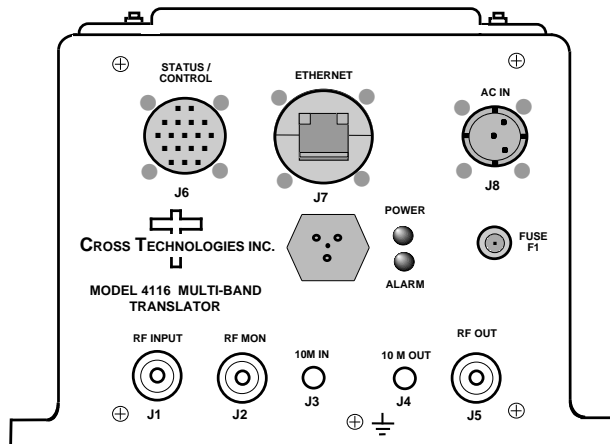


FIGURE 1.1 Model 4116-T21-181 Multi-Band Block Translator Front Panel

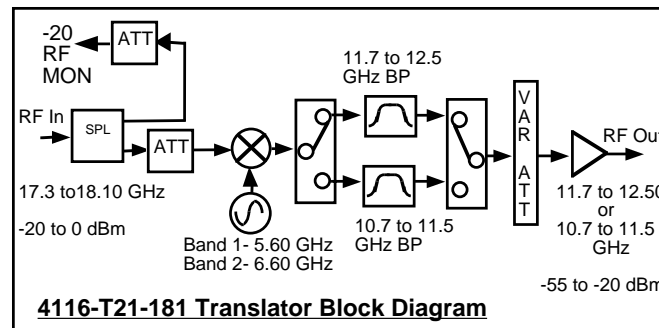


FIGURE 1. Model 4116-T21-181 Multi-Band Block Translator Block Diagram

1.2 Technical Characteristics

TABLE 1.0 4116-T21-181 Multi-Band, Block Translator Specifications*

Input Characteristics					
Impedance / Return Loss	50Ω / 14 dB				
Frequency (GHz)	17.3 to 18.1				
Noise Figure, Maximum	30 dB at maximum gain				
Input Level Range	-20 to 0 dBm				
Output Characteristics					
Impedance / Return Loss	50Ω/10 14 dB, 14 dB typical				
Frequency (GHz)	Band 1 - 11.7 to 12.5				
	Band 2 - 10.7 to 11.5				
Output Level Range	-55 to -20 dBm				
Output 1 dB Compression	-10 dBm, at maximum gain				
Output mute, maximum gain	>50 dBC, at maximum gain				
Channel Characteristics					
Gain at F_C	-20 ±3 dB maximum, (-20 to -45 dB variable in 0.5±0.5 dB steps)				
Input to Output Isolation	> 45 dBC, minimum; > 60 dBC typical (at maximum gain and -20 dBm out)				
Spurious, Inband	> 40 dBC at 0 dBm in				
Spurious, Out of Band	<-50 dBm, signal independent; $f_c \pm 2$ GHz				
Spurious, LO	<-50 dBm, measured at the input; <-40 dBm, measured at the output				
Intermod 2 Tone	> 45 dBC (> 50 dBC typical), for two carriers at 4 MHz spacing, each at -25 dBm out				
Frequency Response	±1.5 dB, over RF band; ± 0.5 dB, 40 MHz BW				
Frequency Sense	Non-inverting				
LO Characteristics					
LO Frequency	Band 1, 5.60 GHz; Band 2, 6.60 GHz				
Frequency Accuracy	± 0.05 ppm maximum over temp internal reference; external reference input				
10 MHz Level In/Mon	Input = +2 to +8 dBm in, Monitor Output = input level ± 1.0 dB, 50 ohms				
Controls, Indicators					
Gain, Band, 10M Frequency	Via Ethernet M&C or Status/Control Connector, RS232C				
Power; PLL Alarm	Green LED; Red LED, External contact closure				
Phase Noise @ Frequency Hz	100	1K	10K	100K	1M
dBc/Hz	-70	-80	-85	-100	-110

Continued on page 5 ...

1.2 Technical Characteristics (continued)

Other	
RF In, Mon. Out Connector	Type N (female), 50Ω
10 MHz Connectors	SMA (female), 50Ω
Weather Resistant* Connectors	Status/Control Connector , MS3116F14-18P; Mating Cable Connector, Ethernet Connector , RJF21B; Mating Cable Connector, RJ45; AC Input Connector , Clipper Series, CL1M1102, Mating Cable Connector, CL1F1101. (Unless otherwise specified, the mating connector is provided pre assembled onto a standard NEMA 5-15 U.S. power cord.)
Size	8" Wide X 6" High X 16" Deep, Weather Resistant* enclosure.
Power	100-240 ±10% VAC, 47 - 63 Hz, 25 watts maximum.
**+0 to +50 degrees C; Specifications subject to change without notice.	

***Weather Resistant** enclosures are designed to be water resistant for installation in an outdoor enclosure/antenna hut OR mounted outdoors on an antenna assembly at their specified temperature ranges. They are designed to be located "out in the elements" (water, sleet, snow, etc.) but they are *not* designed to be "submerged under" water.

If an extended temperature range is required, there is an **Extended Temperature** option (**Option W21**; -30°C to +60°C) available at an additional cost. Contact Cross for quote.

2.0 Installation

The 4116-T21-181 Multi-Band Block Translator consists of a 8"W X 6"H X 16"D Weather resistant* enclosure. A switching, ± 12 , +24, +5 VDC power supply provides power for the internal assemblies.

The 4116-T21-181 can be secured to a mounting plate using the 4 holes on the bottom of the front and rear panels. See Figure 2.5 for mounting dimensions.

2.0.1 Connection to AC Input Power

The 4116-T21-181 utilizes a pre-assembled AC power input cable as described below.

4115-31 Power Input Connector, FCI Clipper Series, CL1M1102 & Crimp Pins	
Mating Connector FCI Clipper Series, CL1F1101, Crimp Pins	
and CL101021 Backshell	
Pin	Input Connector Pin Description
1	100-240 $\pm 10\%$ VAC, 47-63 Hz, 20 watts max.
2	Neutral
3	Ground

2.1 Message Protocol

The serial format for the RS232/RS422/RS485 port is 9600 baud, 8 data bits, no parity, and 1 stop bit.

All messages consist of ASCII printable characters so standard terminals and terminal emulator programs may be used to control and monitor the unit. All messages begin with the open bracket character “{” (ASCII 0x7B) and end with the close bracket character “}” (ASCII 0x7D). Messages consisting of commands to set or change operating parameters and modes of the unit begin with “C” (ascii 0x43) followed by a command specific character. Messages consisting of queries to report operating parameters and modes begin with “S” (ASCII 0x53) followed by a parameter specific character.

2.2 M&C Commands

The following tables summarize the commands and status queries applicable to the 4116-T21-181 Multi-Band Block Translator.

* **PLEASE NOTE:** The two character {aa} prefix, shown in the table below, is present ONLY when RS485 is selected.

Table 2.0 Model 4116-T21-181 M&C Commands

Table 2.0: Model 4116-T21-181 M&C Commands		
Command	Syntax	Description
Set Frequency Band	{aaCBx}	where:
		x = 1 to select band 1: in = (17.3 to 18.1 GHz) out = (11.7 to 12.5 GHz)
		x = 2 to select band 2: in = (17.3 to 18.1 GHz) out = (10.7 to 11.5 GHz)
Set Gain	{aaCGxxx}	where:
		xxx = 3 characters
		Range: -200 to -450 (-20.0 to -45.0 in 0.5 dB steps)
		Example: {CG-355} will set the gain to -35.5 dB
Set Serial Interface	{aaCIx}	where:
		x = 0 to select RS232
		x = 1 to select RS422
		x = 2 to select RS485
Set RS485 address	{aaCRxx}	where:
		xx = 2 characters
		Range: 00 to 31
Set Mute	{aaCMx}	where:
		x = 1 to mute the output
		x = 0 to unmute the output
Set Int. 10 MHz reference offset	{aaCOxxxxx}	where:
		xxxxx = 5 characters
		Range: +2000 to -2000
Set 10 MHz reference mode	{aaCEx}	where:
		x = 1 to select internal reference
		x = 2 to select external reference
		x = 3 to select auto reference

2.3 M&C Queries

Table 2.1 Model 4116-T21-181 M&C Commands

Table 2.1: Model 4116-T21-181 M&C Queries		
Command	Syntax	Description
Frequency Band	{aaSB}	Returns {aaSBx} where:
		x = 1 if band 1 is selected: in = (17.3 to 18.1 GHz) out = (11.7 to 12.5 GHz)
		x = 2 if band 2 is selected: in = (17.3 to 18.1 GHz) out = (10.7 to 11.5 GHz)
Gain	{aaSG}	Returns {aaSGxxx} where:
		xxx = 3 characters
		Range: -200 to -450 (in 0.5 dB steps)
		Example: {aaSG-245} indicates the current gain setting is -24.5 dB
Mute	{aaSM}	Returns {aaSMx} where:
		x = 0 if mute is off
		x = 1 if mute is on
10 MHz reference	{aaSE}	Returns {aaSEx} where:
		x = 1 if Internal 10 MHz reference is selected
		x = 2 if External 10 MHz reference is selected
		x = 3 if Auto 10 MHz reference is selected
Serial Interface	{aaSI}	Returns {aaSIx} where:
		x = 0 if RS232 is selected
		x = 1 if RS422 is selected
		x = 2 if RS485 is selected
RS485 address	{aaSR}	Returns {aaSAxx} where:
		xx = 2 characters
		Range: 00 to 31

Continued on page 9...

Table 2.1 Model 4116-T21-181 M&C Commands (continued from page 8)

Table 2.1: Model 4116-T21-181 M&C Queries - Continued...		
Command	Syntax	Description
Int. 10 MHz reference offset	{aaSO}	Returns {aaSOxxxxx} where: xxxxx = 5 characters Range: +2000 to -2000
Summary Alarm	{aaSA}	Returns {aaSAx} where: x = 0 if no summary alarm, x = 1 if summary alarm
Internal Temperature	{aaST}	Returns {aaSTxxx} where: xxx = 3 characters Range (-99 to +99) degrees celsius
Model and firmware revision	{aaSV}	returns {aaSVxxxxxxxxxyyyy} where: xxxxxxxx = unit model number yyyy = unit firmware rev.
Unit Status	{aaSS}	returns {aaSSwxy} where: w = summary alarm: 0 = off, 1 = on x = ref. source: 1 = internal, 2 = external y = oven status: 0 = normal, 1 = oven warmup
Get IP address	{aaSi}	returns {aaSixxx.xxx.xxx.xxx} where xxx.xxx.xxx.xxx = IP address
Get subnet mask	{aaSs}	returns {aaSsxxx.xxx.xxx.xxx} where xxx.xxx.xxx.xxx = subnet mask

2.4 ETHERNET Interface Installation and Operation

The 4116-T21-181 Multi-Band Block Translator is equipped with a 10/100 Base-T compatible Ethernet interface for control and monitoring of its operating parameters. An HTML script interface allows the user to monitor and control the converter using a standard web browser. SNMP (Simple Network Management Protocol) is also supported. Contact Cross Technologies for the SNMP MIB file.

2.4.1 Methods of Connection

Directly Connected to a PC:

For control from a local PC, attach the 4116-T21-181's Ethernet port to the Ethernet network connector on the PC using a crossover RJ-45 cable.

LAN Connection

For LAN connections, attach the 4116-T21-181 Ethernet port to the LAN using a normal RJ-45 cable. Use any PC on the LAN to connect to the 4116-T21-181.

2.4.2 Ethernet Configuration

Each 4116-T21-181 must be configured with an appropriate IP address, Netmask, and Gateway assigned by your network manager. The 4116-T21-181 is set at the factory with a static address that is written on a tag attached to the unit. The device server in the 4116-T21-181 has a built in HTTP based configuration manager that is used to configure network settings. To access the configuration manager open a web browser and enter the IP address of the 4116-T21-181 in the browser's address field. The window shown in Figure 2-A will appear. As delivered, there is no password set. Choose your user name and password here or leave those fields blank and click OK to proceed to the configuration manager web page.



Figure 2-A: Password Screen

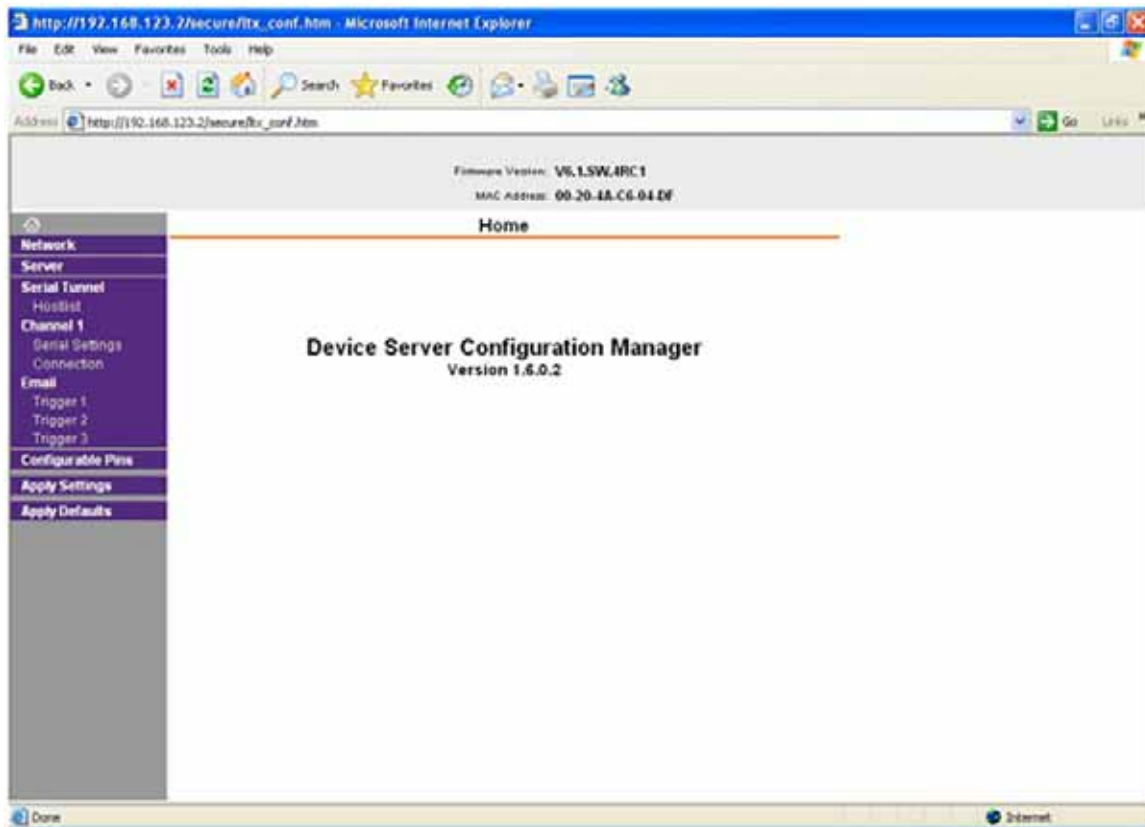


Figure 2-B: Configuration Manager Screen

In the left frame of the configuration manager click on Network to display the Network Settings screen. Enter the IP address, Subnet mask, and Gateway address with delimiter dots (example: 192.168.192.47). Click to apply settings in the left frame to apply the new settings in the network device.

2.4.3 Web page M&C

Enter the following address in a web browser to access the M&C Web page:

http://<ip address of 41xx>/serial/0/setup.htm where <ip address> is the IP address of the unit. Figure 2-C shows the web page from a model 4116-T21-181.

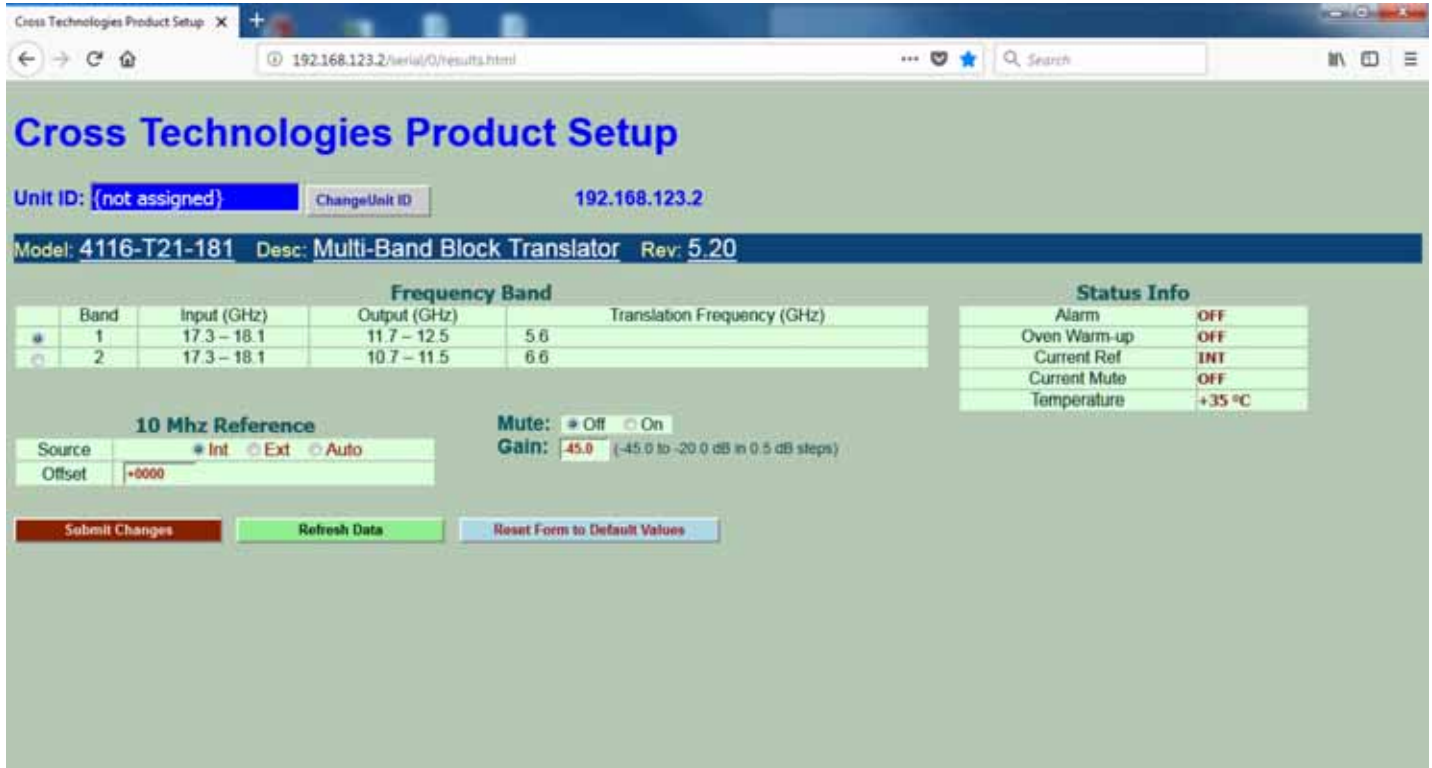


Figure 2-C: Model 4116-T21-181 Web page

2.4.4 SNMP Configuration

Setting of SNMP parameters such as Community Write and Community Read strings requires a *Telnet*[®] connection to port 9999. The following instructions explain how to establish such a *Telnet*[®] connection using Windows XP's Hyper Terminal utility .

Start the Hyper Terminal application and select “New Connection” from the “File” drop down menu. The next screen is a “Connect To” dialog box. Select TCP/IP (Winsock) from the “Connect” using drop down menu. Enter the IP address of the 4116-T21-181 in the “Host Address:” field and 9999 in the “Port Number” field. Figure 2-E shows an example of the Hyper Terminal settings required to access the SNMP configuration menu.

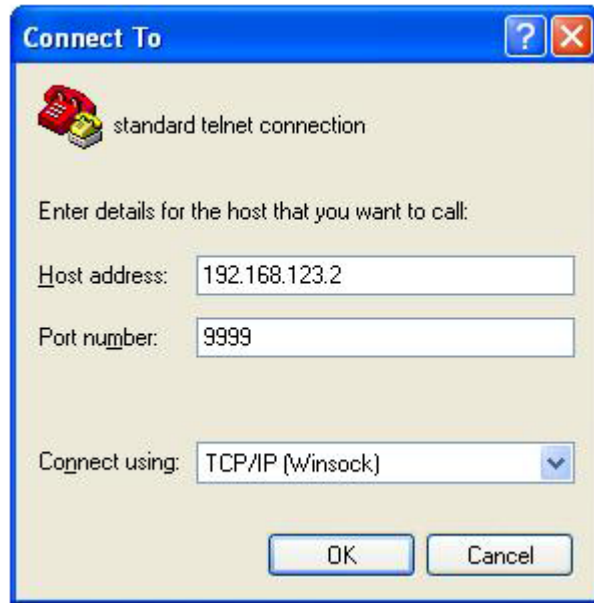
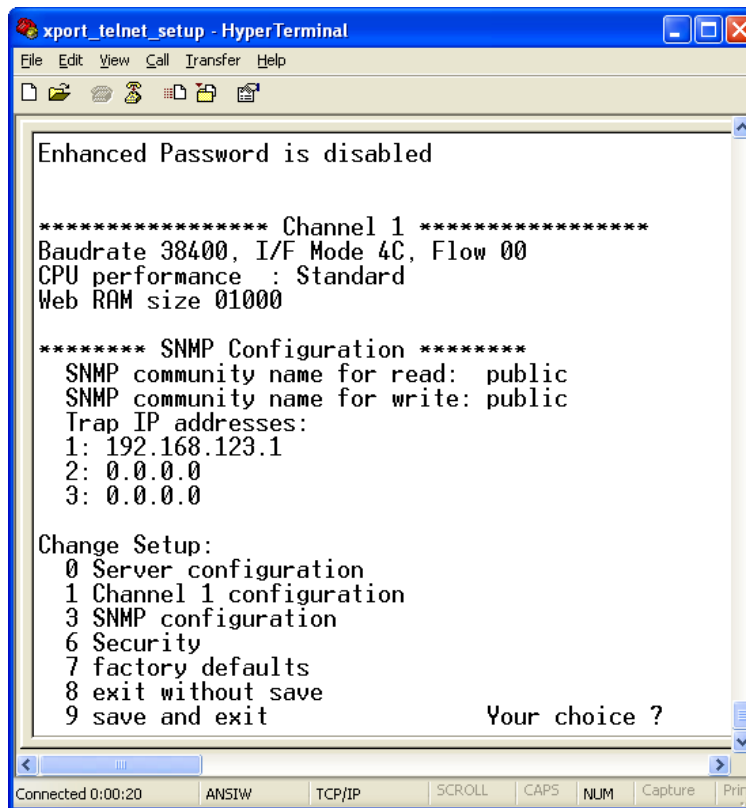


Figure 2-E: Telenet® Settings in Hyper Terminal

Once the *Telnet*® connection is established you will be prompted to “Press Enter for Setup Mode.” Press enter and a menu of device server configuration options will appear (see Figure 2-F). Select menu item 3, “SNMP configuration.” You will be prompted to enter SNMP community read and write strings. After setting your desired community strings you will be prompted to “Enter IP addresses for SNMP traps:” You must enter at least one and up to four IP addresses of SNMP managers that will access the unit. This is required even though SNMP traps are not implemented. The unit will not process SNMP SET and GET requests from an SNMP manager unless the IP address associated with that manager is entered in the device server.

Figure 2-F: Device Server Configuration Menu



```
xport_telnet_setup - HyperTerminal
File Edit View Call Transfer Help
Enhanced Password is disabled

***** Channel 1 *****
Baudrate 38400, I/F Mode 4C, Flow 00
CPU performance : Standard
Web RAM size 01000

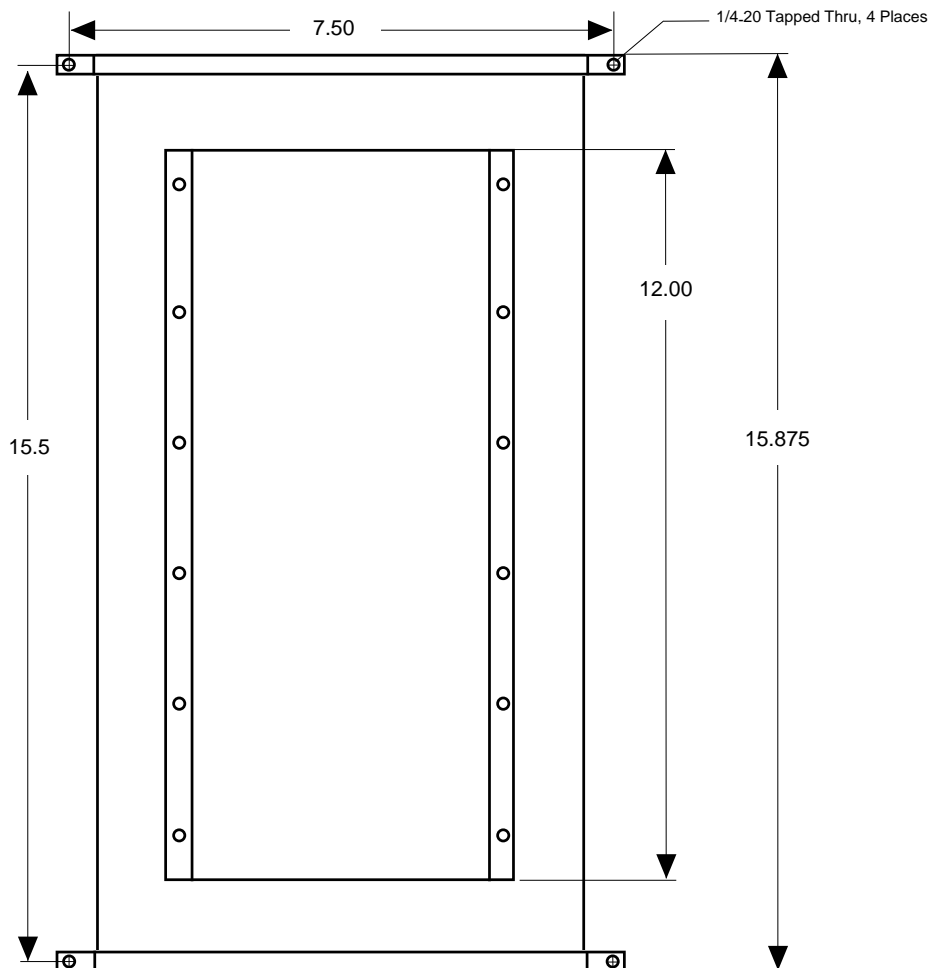
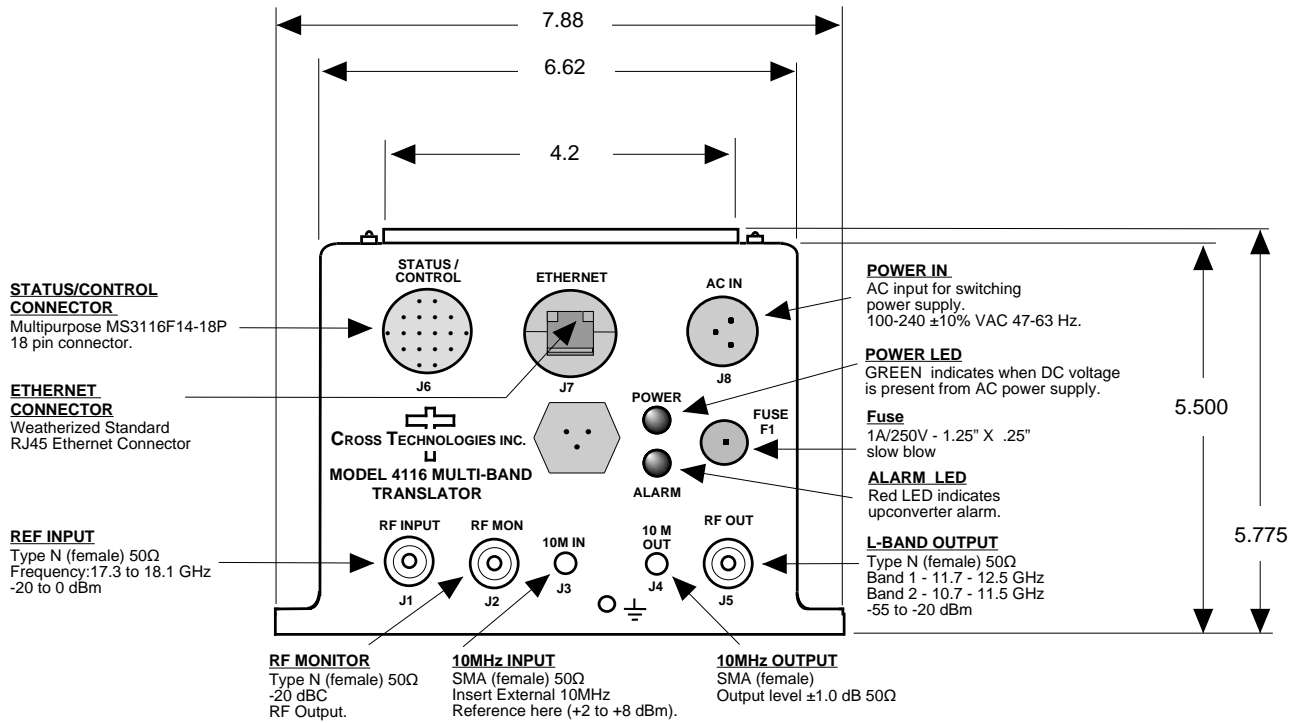
***** SNMP Configuration *****
SNMP community name for read: public
SNMP community name for write: public
Trap IP addresses:
1: 192.168.123.1
2: 0.0.0.0
3: 0.0.0.0

Change Setup:
0 Server configuration
1 Channel 1 configuration
3 SNMP configuration
6 Security
7 factory defaults
8 exit without save
9 save and exit

Your choice ?

Connected 0:00:20 ANSIW TCP/IP SCROLL CAPS NUM Capture Print
```

Figure 2.5 Shows front panel input and output connections, top view and baseplate mounting dimensions.



2.6 Physical Interface

All 4115 and 4116 units provide a RS232/RS422/RS485 interface port and a 10/100 Base-T Ethernet port. Both ports are available when the unit is installed and powered up. Commands may be sent to either port at any time and they will be processed in the order that they are received. The RS232/RS422/RS485 signals connect via a multipurpose MS3116, 18 pin connector as shown in Figure 2.5. The Ethernet signals connect via a standard RJ45 connector.

Table 2.5.1: Monitor and Control Connector

Monitor and Control Connector Pinout	
Connector part number MS3112E14-18S	
Mating Cable Connector part number MS3116F14-18P	
Pin	Signal Description
A	Chassis Ground
N	Summary Alarm Normally Closed
P	Summary Alarm Common
R	Summary Alarm Normally Open
E	RS422/RS485 Data Out-
F	Signal Ground
C	RS422/RS485 Data In-
D	RS422/RS485 Data Out+, RS232 Data Out
B	RS422/RS485 Data In+, RS232 Data In

NOTE: Planning Ethernet Access

It is recommended that IP knowledgeable customer personnel be consulted as a resource in the installation and use of the Ethernet access features of the Cross Technologies' product.

2.7 Installation/Operation

Installing and Operating the 4116-T21-181 Multi-Band, Block Translator

1. Connect a -20 dBm to 0 dBm signal to the RF INPUT, J1, (Figure 2.5).
2. Connect the RF OUTPUT, J5, to the external equipment.
3. Using the pre-assembled AC power input cable (furnished), connect 100-240 \pm 10% VAC, 47 - 63 Hz to AC IN connector on the front panel.
4. If a custom length power cable must be made, refer to description below for connections*.
5. Be sure DS1 (green, DC Power) is on and DS2 (red, Alarm) is off (Figure 2.5).
6. Set gain for the desired output level insuring the output level is always in the range of -55 to -20 dBm.
7. Select either INT (for internal 10 MHz ref), AUTO (for internal 10 MHz ref UNLESS an external 10 MHz, +2 to +8 dBm signal is connected to J3), or EXT (for external 10 MHz, +2 to +8 dBm ref that is inserted at J3) on the front panel.
8. Check that a 10 MHz signal is present at the 10 MHz REF OUTPUT at the same level as the input, \pm 1.0 dB (J4 - Figure 2.5).
9. AC Fuse - The fuse is a 1.25"x .25" - 1.0 amp (slow blow) and is inserted in the fuse F1 position.

NOTE: If a fuse continues to open, the power supply is most likely defective.

CAUTION: When checking or replacing the fuse, do not over tighten the fuse holder cap.

This can displace the cap's O-ring and the weatherproof seal will be lost.

4116-T21-181 AC Power Input Connections	
Connector, Clipper Series, CL1M1102 and crimp pins	
Mating Connector, Clipper Series, CL1F1101 and crimp pins	
Pin	Input Connector Pin Description
1	100-240 \pm 10% VAC, 47-63 Hz, 20 watts max.
2	Neutral
3	Ground



6170 Shiloh Road
Alpharetta, Georgia 30005

(770) 886-8005
FAX (770) 886-7964
Toll Free 888-900-5588

WEB www.crosstechnologies.com
E-MAIL info@crosstechnologies.com

Printed in USA