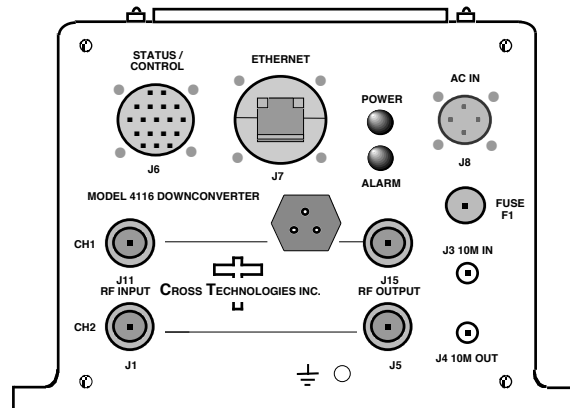


Instruction Manual

Model 4116-22-8085 Multi-Band Block Translator Weather Resistant Unit

May 2023, Rev. 0



Data, drawings, and other material contained herein are proprietary to Cross Technologies, Inc., but may be reproduced or duplicated without the prior permission of Cross Technologies, Inc. for purposes of operating the equipment. Printed in USA.

When ordering parts from Cross Technologies, Inc., be sure to include the equipment model number, equipment serial number, and a description of the part.



6170 Shiloh Road

Alpharetta, Georgia 30005

(770) 886-8005 • FAX (770) 886-7964 • Toll Free 888-900-5588

WEB www.crosstechnologies.com

E-MAIL info@crosstechnologies.com

INSTRUCTION MANUAL

MODEL 4116-22-8085 Multi-Band Translator, Weather Resistant

| <u>TABLE OF CONTENTS</u> | <u>PAGE</u> |
|-------------------------------------|-------------|
| Warranty | 2 |
| 1.0 General | 3 |
| 1.1 Equipment Description | 3 |
| 1.2 Technical Characteristics | 4 |
| 2.0 Installation | 6 |
| 2.1 Message Protocol | 6 |
| 2.2 M&C Commands | 7 |
| 2.3 M&C Queries | 8 |
| 2.4 Ethernet Interface Installation | 9 |
| 2.4.1 Methods of Connection | 9 |
| 2.4.2 Ethernet Configuration | 9 |
| 2.4.3 Webpage M&C | 12 |
| 2.4.4 SNMP Configuration | 12 |
| 2.5 Translator Outline Drawings | 15 |
| 2.6 Physical Interface | 16 |
| 2.7 Installation/Operation | 17 |

WARRANTY - The following warranty applies to all Cross Technologies, Inc. products.

All Cross Technologies, Inc. products are warranted against defective materials and workmanship for a period of one year after shipment to customer. Cross Technologies, Inc.'s obligation under this warranty is limited to repairing or, at Cross Technologies, Inc.'s option, replacing parts, subassemblies, or entire assemblies. Cross Technologies, Inc. shall not be liable for any special, indirect, or consequential damages. This warranty does not cover parts or equipment which have been subject to misuse, negligence, or accident by the customer during use. All shipping costs for warranty repairs will be prepaid by the customer. There are not other warranties, express or implied, except as stated herein.



6170 Shiloh Road

Alpharetta, Georgia 30005

(770) 886-8005 • FAX (770) 886-7964 • Toll Free 888-900-5588

WEB www.crosstechnologies.com • E-MAIL info@crosstechnologies.com

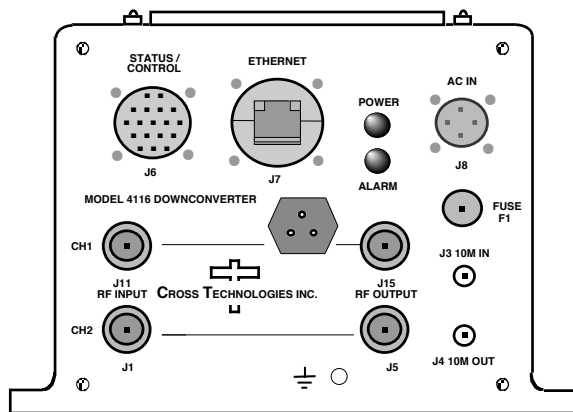
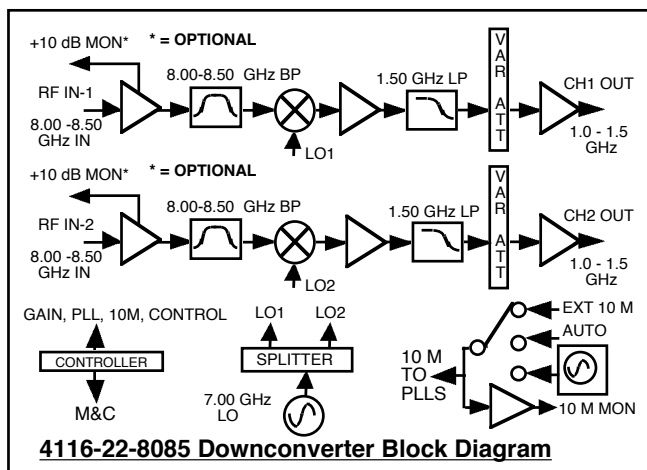
MODEL 4116-22-8085 Translator, Weather Resistant*

1.0 General

1.1 Equipment Description

The 4116-22-8085 Block Downconverter, 8.00-8.50 GHz, 2 Channel, converts two RF channels to 1.0 - 1.5 GHz with a common LO of 7.00 GHz. Front panel LEDs provide indication of DC Power, and PLL Alarm. The RF to L-band maximum gain is +35 ±2 dB, (+35 to +5 dB variable in 0.5 ±0.5 dB steps). Connectors are Type N female for RF IN and OUT, optional RF INPUT monitor, and SMA female for the external reference input and reference output. Gain and internal/external 10 MHz frequency select are controlled by the Ethernet M&C or via the Status/Control connector. In AUTO, the 10 MHz reference stays in external if the external level is in the +2 to +8 dBm range. It is powered by a 100-240 ± 10% VAC power supply, and is in a 8" W X 6" H X 16" D Weather Resistant* enclosure.

(NOTE: *Weather Resistant enclosures are designed to be water resistant for installation in an outdoor enclosure/antenna hut OR mounted outdoors on an antenna assembly at their specified temperature ranges. They are designed to be located “out in the elements” (water, sleet, snow, etc.) but they are *not* designed to be “submerged under” water. If an extended temperature range is required, there is an **Extended Temperature** option (**Option W21**; -30°C to +60°C) available at an additional cost. Contact Cross for quote.



Model 4116-22-8085 Multi-Band Translator, Front Panel

1.2 Technical Characteristics

TABLE 1.0 4116-22-8085 Multi-Band Block Translator Specifications**

Input Characteristics (all channels)

| | |
|-----------------------|--|
| Impedance/Return Loss | 50Ω/14 dB |
| Frequency | 8.00 to 8.50 GHz |
| Noise Figure, Max. | 15 dB at F _c , G _{max} |
| Input Level range | -55 to -35 dBm, F _c |

Output Characteristics (all channels)

| | |
|-----------------------|---|
| Impedance/Return Loss | 50 Ω /14 dB |
| Frequency | 1.0 - 1.5 GHz |
| Output Level Range | -20 to 0 dBm, F _c , G _{max} |
| Output 1 dB compr. | +10 dBm, at F _c , G _{max} |

Channel Characteristics (all channels)

| | |
|------------------------|--|
| Gain at F _c | +35 dB ±2 dB max., (+35 to +5 dB variable in 0.5 ±0.5 dB steps), F _c |
| Image Rejection | > 60 dB, min |
| Spurious, Inband | SIGNAL RELATED <-60 dBc in band, 0 dBm out; SIGNAL INDEPENDENT, <-60 dBm, (1.0 - 1.5 GHz) G _{max} |
| Spurious, Out of band | <-50 dBm spurious, signal independent; 0.5-1.0 and 1.5- 2.5 GHz out, G _{max} |
| Intermodulation | <-55 dBc for two carriers at F _c ± 2 MHz spacing, each at -10 dBm out, G _{max} |
| Frequency Response | ±1.5 dB, 1.0 - 1.5 GHz out; ±0.5 dB, 40 MHz BW, G _{max} |
| Frequency Sense | Non-inverting |

LO Characteristics (all channels)

| | |
|---------------------|---|
| LO Frequency | 7.00 GHz, Fixed |
| Frequency Accuracy | ± 0.05 ppm max over temp internal reference; ext. ref. input |
| 10 MHz level In/Mon | Input=+2 to +8 dBm in; Monitor Output = Input Level ± 1.0 dB, 50 ohms |

| | | | | | |
|------------------------|-----|----|-----|------|-----|
| Phase Noise @ F (Hz) > | 100 | 1K | 10K | 100K | 1M |
| dBc/Hz | 70 | 80 | 85 | 95 | 110 |

Controls, Indicators

Gain, 10M Freq. Gain and internal/external 10 MHz frequency select via Ethernet (w/SNMP) M&C or Status/Control Connector.

Power; PLL Alarm Green LED ; Red LED, External contact closure

| Other | |
|---|--|
| RF In / RF Out Connector | Type N (female) |
| 10 MHz Connectors | SMA (female), 50Ω |
| Weather Resistant* Connectors | Status/Control Connector , MS3112E14-18S; Mating Cable Connector, MS3116F14-18P. Ethernet Connector , RJF21B; Mating Cable Connector, RJF6G; Cable interface, Standard RJ45. AC Input Connector , Clipper Series, CL1M1102, Mating Cable Connector, CL1F1101. (Unless otherwise specified, the mating connector is provided preassembled onto a standard NEMA 5-15 U.S. power cord.) |
| Size | 8" Wide X 6" High X 16" Deep, Weather Resistant* Enclosure. |
| Power | 100-240 ±10% VAC, 47 - 63 Hz, 25 watts maximum. |
| **+0 to +50 degrees C; Specifications subject to change without notice. | |

TABLE 1.0 4116-22-8085 Multi-Band Block Translator Specifications (continued)

***Weather Resistant** enclosures are designed to be water resistant for installation in an outdoor enclosure /antenna hut OR mounted outdoors on an antenna assembly at their specified temperature ranges. They are designed to be located "out in the elements" (water, sleet, snow, etc.) but they are *not* designed to be "submerged under" water.

If an extended temperature range is required, there is an **Extended Temperature** option (**Option W21**; -30°C to +60°C) available at an additional cost. Contact Cross for quote.

2.0 Installation

The 4116-22-8085 Multi-Band Block Translator consists of a 8" W x 6" H x 16" D Weather Resistant enclosure.

A switching, ± 12 , +24, +5 VDC power supply provides power for the internal assemblies.

The 4116-22-8085 can be secured to a mounting plate using the 4 holes on the bottom of the front and rear panels. See Figure 2.5 for mounting dimensions.

2.0.1 Connection to AC Input Power

The 4116-22-8085 utilizes a pre-assembled AC power input cable as described below.

| 4116-22-8085 Power Input Connector, FCI Clipper Series, CL1M1102 & Crimp Pins | |
|---|---|
| Mating Connector FCI Clipper Series, CL1F1101, Crimp Pins and CL101021 Backshell | |
| Pin | Input Connector Pin Description |
| 1 | 100-240 $\pm 10\%$ VAC, 47-63 Hz, 20 watts max. |
| 2 | Neutral |
| 3 | Ground |
| | |

2.1 Message Protocol

The serial format for the RS232/RS422/RS485 port is 9600 baud, 8 data bits, no parity, and 1 stop bit.

All messages consist of ASCII printable characters so standard terminals and terminal emulator programs may be used to control and monitor the unit. All messages begin with the open bracket character "{" (ASCII 0x7B) and end with the close bracket character "}" (ASCII 0x7D). Messages consisting of commands to set or change operating parameters and modes of the unit begin with "C" (ascii 0x43) followed by a command specific character. Messages consisting of queries to report operating parameters and modes begin with "S" (ASCII 0x53) followed by a parameter specific character.

2.2 M&C Commands

The following tables summarize the commands and status queries applicable to the 4116-22-8085 Multi-Band Block Translator.

* **PLEASE NOTE:** The two character {aa} prefix, shown in the following table, is present ONLY when RS485 is selected.

Table 2.0 Model 4116-22-8085 M&C Commands

| Command | Syntax | Description |
|---------------------------------|------------|---|
| Set CH1 Gain | {aaCGxxx} | where: xxx = 3 characters Range: 50 to 350 (5.0 to 35.0 in 0.5 dB steps) example: {CG155} will set CH1 gain to 15.5 dB |
| Set CH2 Gain | {aaCHxxx} | where: xxx = 3 characters Range: 50 to 350 (5.0 to 35.0 in 0.5 dB steps) example: {CH155} will set CH1 gain to 15.5 dB |
| Set CH1 Mute | {aaCMx} | where: x = 1 to mute CH1 rf out x = 0 to unmute CH1 rf out |
| Set CH2 Mute | {aaCNx} | where: x = 1 to mute CH2 rf out x = 0 to unmute CH2 rf out |
| Set Serial Interface | {aaClx} | where: x = 0 to select RS232 x = 1 to select RS422 x = 2 to select RS485 |
| Set RS485 address | {aaCRxx} | where: xx = 2 characters Range: 00 to 31 |
| Set Int 10 MHz reference offset | {aaCOxxxx} | where: xxxx = 4 or 5 characters Range: +2000 to -2000 |
| Set 10 MHz reference mode | {aaCEx} | where: x = 1 to select Internal 10 MHz reference x = 2 to select External 10 MHz reference x = 3 to select Auto 10 MHz reference |

2.3 M&C Queries

Table 2.1 Model 4116-22-8085 M&C Queries

| Command | Syntax | Description |
|---------------------------------|--------|--|
| Get CH1 Gain | {aaSG} | returns {aaSGxxx} where: xxx = 3 characters Range: 50 to 350 (5.0 to 35.0 in 0.5 dB steps) example: {SG155} when CH1 gain is set to 15.5 dB |
| Get CH2 Gain | {aaSH} | returns {aaSHxxx} where: xxx = 3 characters Range: 50 to 350 (5.0 to 35.0 in 0.5 dB steps) example: {SH155} when CH2 gain is set to 15.5 dB |
| Get CH1 Mute | {aaSM} | returns {aaSMx} where: x = 1 character x = 1 if CH1 rf out is muted x = 0 if CH1 rf out is not muted |
| Get CH2 Mute | {aaSN} | returns {aaSNx} where: x = 1 character x = 1 if CH2 rf out is muted x = 0 if CH2 rf out is not muted |
| Get Serial Interface | {aaSI} | Returns {aaSIx} where: x = 0 if RS232 is selected x = 1 if RS422 is selected x = 2 if RS485 is selected |
| Get RS485 address | {aaSR} | Returns {aaSRxx} where: xx = 2 characters Range: 00 to 31 |
| Get Int 10 MHz reference offset | {aaSO} | Returns {aaSOxxxxx} where: xxxxx = 5 characters Range: +2000 to -2000 |
| Get 10 MHz reference mode | {aaSE} | Returns {aaSEx} where: x = 1 if Internal 10 MHz reference is selected x = 2 if external 10 MHz reference is selected x = 3 if Auto 10 MHz reference is selected |

2.4 ETHERNET Interface Installation and Operation

The 4116-22-8085 Multi-Band Block Translator is equipped with a 10/100 Base-T compatible Ethernet interface for control and monitoring of its operating parameters. An HTML script interface allows the user to monitor and control the converter using a standard web browser. SNMP (Simple Network Management Protocol) is supported. Contact Cross Technologies for the SNMP MIB file. The device can also be controlled through a direct TCP/IP connection.

2.4.1 Methods of Connection

Directly Connected to a PC:

For control from a local PC, attach the 4116-22-8085's Ethernet port to the Ethernet network connector on the PC using a crossover RJ-45 cable.

LAN Connection

For LAN connections, attach the 4116-22-8085 Ethernet port to the LAN using a normal RJ-45 cable. Use any PC on the LAN to connect to the 4116-22-8085.

2.4.2 Ethernet Configuration

Each 4116-22-8085 must be configured with an appropriate IP address, Netmask, and Gateway assigned by your network manager. The 4116-22-8085 is set at the factory with a static address of **192.168.123.2**.

Configuration through a web browser

The device server in the 4116-22-8085 has a built in http based configuration manager that is used to configure network settings. To access the configuration manager open a web browser and enter the IP address of the 4116-22-8085 in the browser's address field. The window shown in Figure 2-A will appear. As delivered, there is no password set. Choose your user name and password here or leave those fields blank and click OK to proceed to the configuration manager webpage.



Figure 2-A: Password Screen

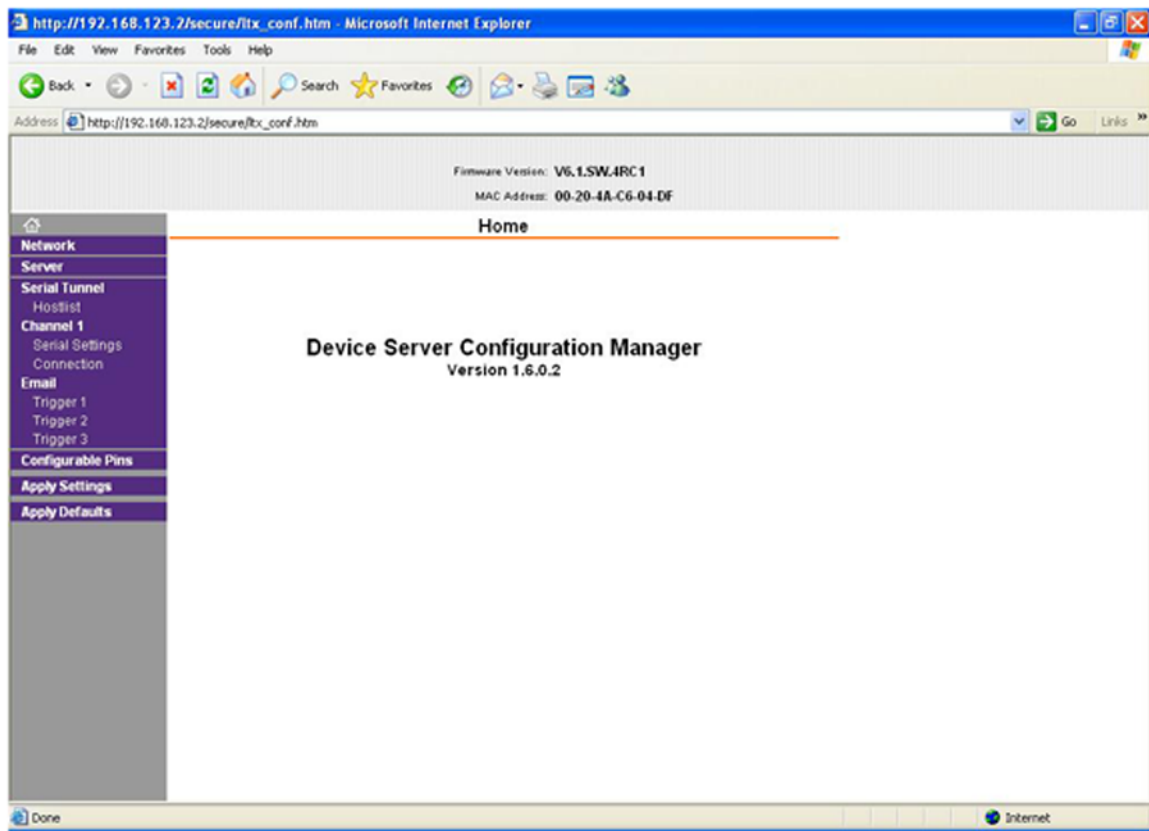


Figure 2-B: Configuration Manager Screen

In the left frame of the configuration manager click on Network to display the Network Settings screen. See figure 2-C.

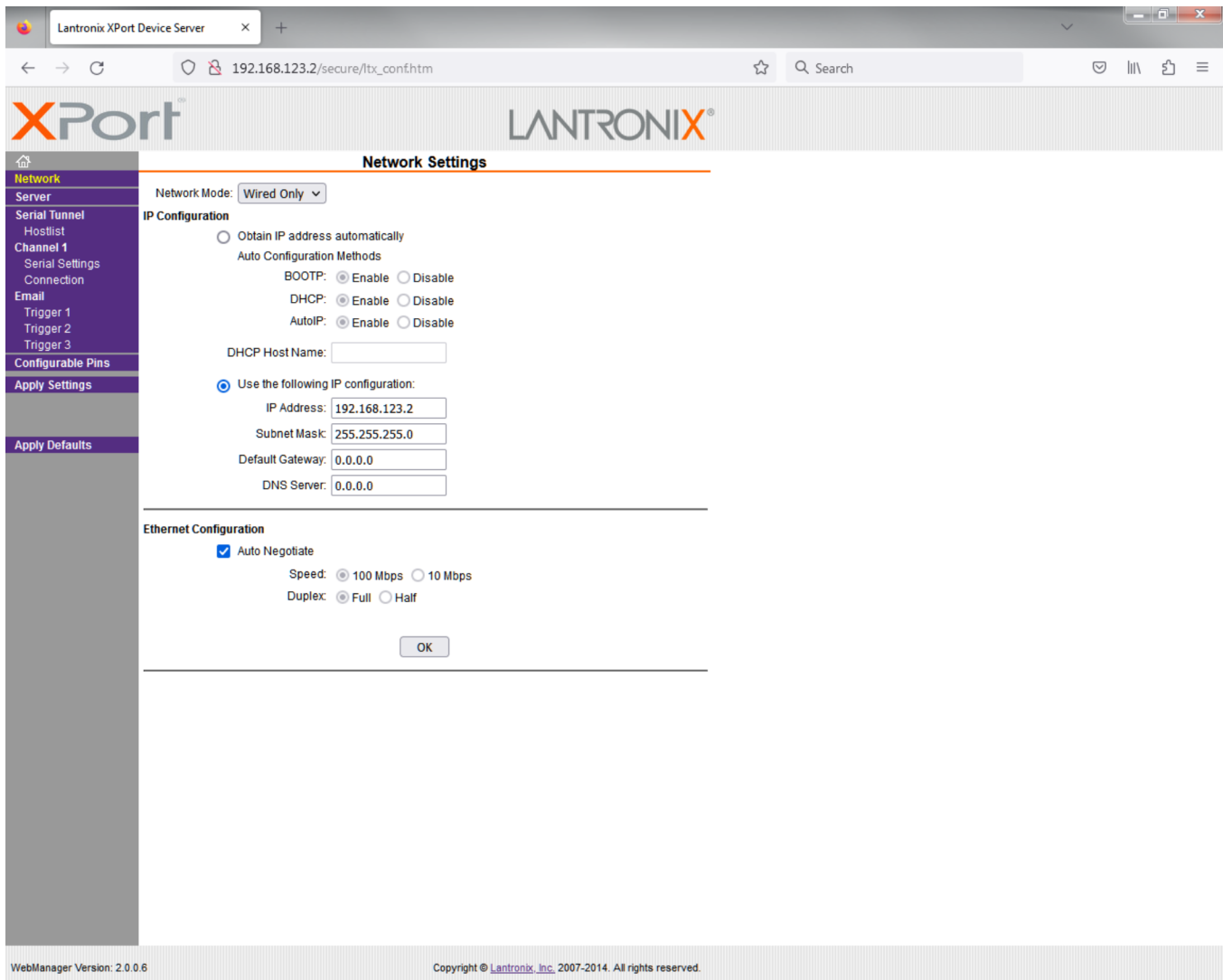


Figure 2-C: Network Settings Screen

Enter the desired network settings, i.e. IP address, subnet mask, and gateway. Click “OK” then click “Apply Settings”.

2.4.3 Webpage M & C

Enter the following address in a web browser to access the M & C webpage:

http://<ip address of 41xx>/serial/0/setup.htm where <ip address> is the IP address of the unit.

Figure 2-D (page 12) shows the product setup web page from a model 4116-22-8085 frequency converter.

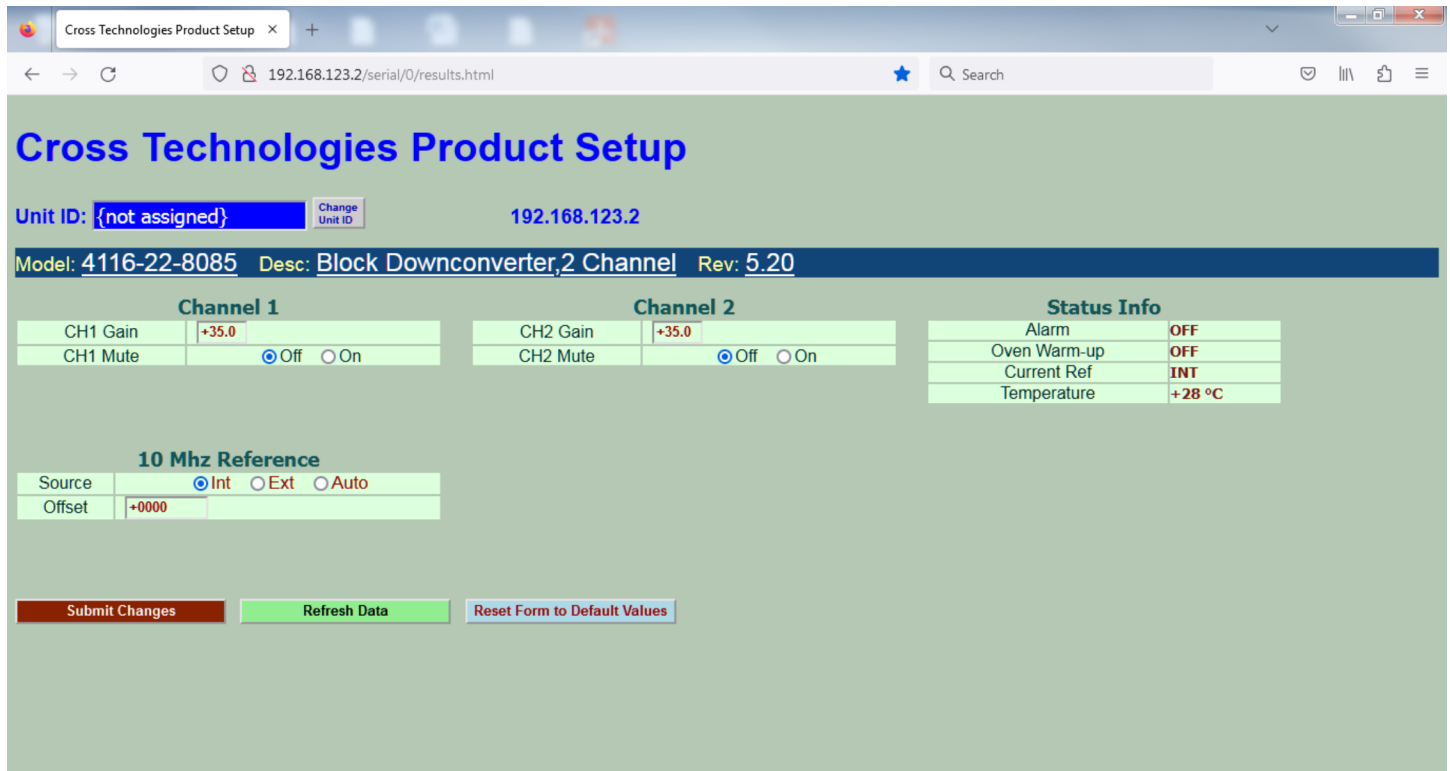


Figure 2-D: Model 4116-22-8085 Product Setup Web Page

2.4.4 SNMP Configuration

Setting of SNMP parameters such as Community Write and Community Read strings requires a *Telnet*[®] connection to port 9999. The following instructions explain how to establish such a *Telnet*[®] connection using Windows XP's Hyper Terminal utility.

Start the Hyper Terminal application and select "New Connection" from the "File" drop down menu.

The next screen is a "Connect To" dialog box. Select TCP/IP (Winsock) from the "Connect" drop down menu.

Enter the IP address of the 4116-22-8085 in the "Host address:" field and 9999 in the "Port number" field.

Figure 2-E shows an example of the Hyper Terminal settings required to access the SNMP configuration menu.



Figure 2-E: Telnet® Settings in Hyper Terminal

Once the *Telnet*® connection is established you will be prompted to “Press Enter for Setup Mode”. Press enter and a menu of device server configuration options will appear (see Figure 2-F). Select menu item 3, “SNMP configuration.” You will be prompted to enter SNMP community read and write strings. After setting your desired community strings you will be prompted to “Enter IP addresses for SNMP traps.” You must enter at least one and up to four IP addresses of SNMP managers that will access the unit. This is required even though SNMP traps are not implemented. The unit will not process SNMP SET and GET requests from an SNMP manager unless the IP address associated with that manager is entered in the device server.

Figure 2-F: Device Server Configuration Menu

```
xport_telnet_setup - HyperTerminal
File Edit View Call Transfer Help
Enhanced Password is disabled

***** Channel 1 *****
Baudrate 38400, I/F Mode 4C, Flow 00
CPU performance : Standard
Web RAM size 01000

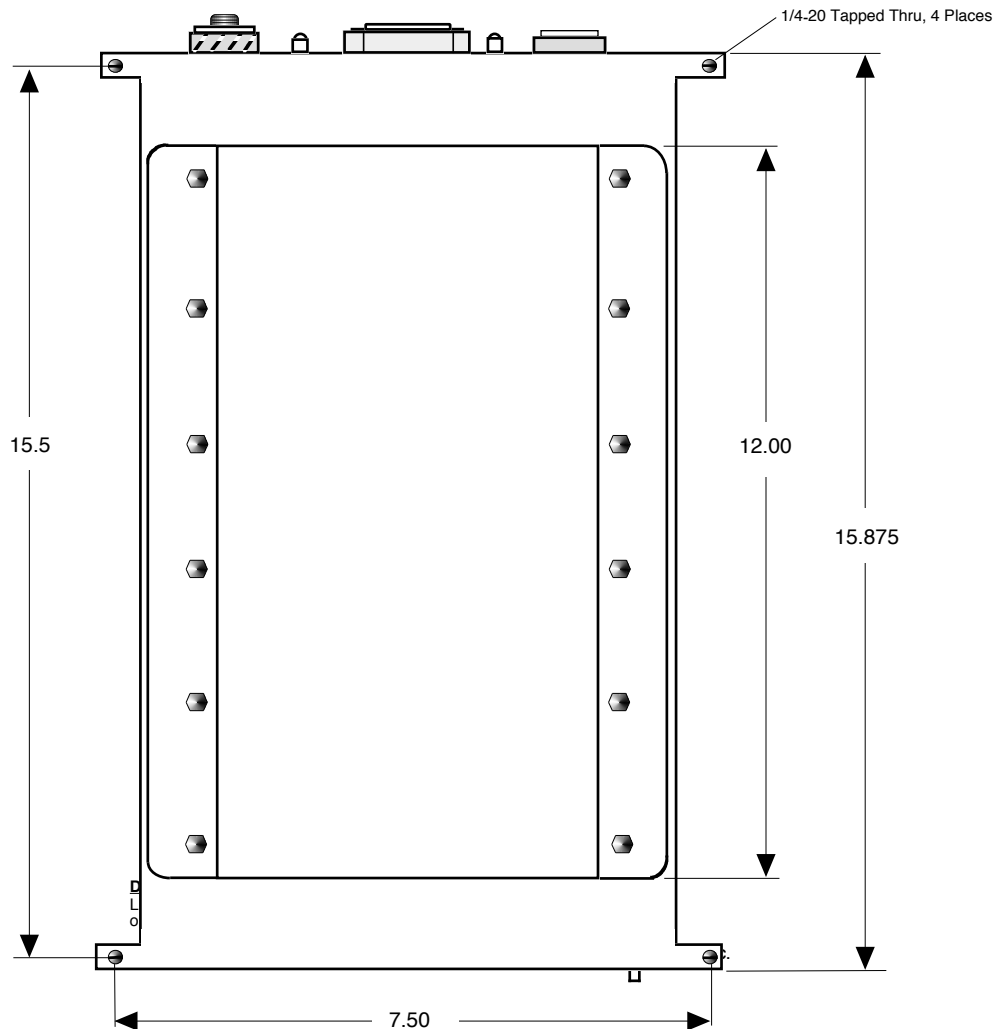
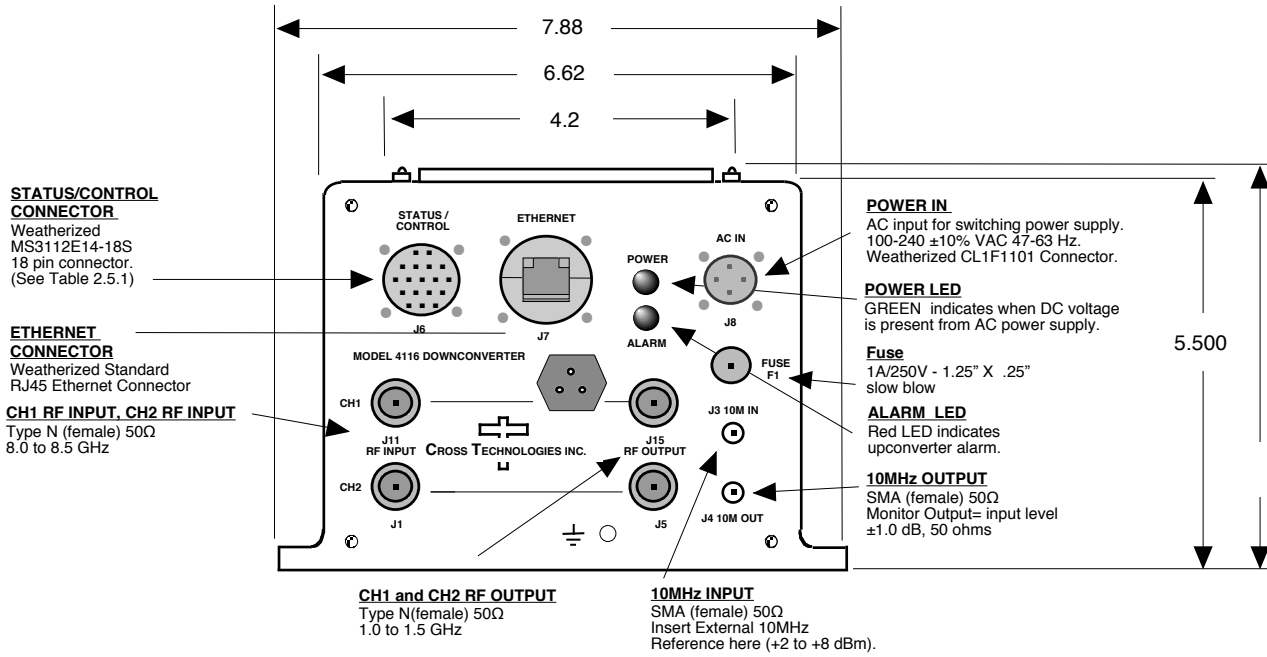
***** SNMP Configuration *****
SNMP community name for read: public
SNMP community name for write: public
Trap IP addresses:
1: 192.168.123.1
2: 0.0.0.0
3: 0.0.0.0

Change Setup:
0 Server configuration
1 Channel 1 configuration
3 SNMP configuration
6 Security
7 factory defaults
8 exit without save
9 save and exit

Your choice ?
```

Connected 0:00:20 ANSIV TCP/IP SCROLL CAPS NUM Capture Print

Figure 2.5 Shows the input and output connections on the front panel and the top view of the 4116-22-8085:



2.6 Physical Interface

All 4115 and 4116 units provide a RS232/RS422/RS485 interface port and a 10/100 Base-T Ethernet port. Both ports are available when the unit is installed and powered up. Commands may be sent to either port at any time and they will be processed in the order that they are received. The RS232/RS422/RS485 signals connect via a multipurpose MS3116, 18 pin connector as shown in Figure 2.5. The Ethernet signals connect via a standard RJ45 connector.

Table 2.5.1: Monitor and Control Connector

| Monitor and Control Connector Pinout | |
|---|--|
| Connector part number | MS3112E14-18S |
| Mating | Cable Connector part number MS3116F14-18P |
| Pin | Signal Description |
| A | Chassis Ground |
| | |
| N | Summary Alarm Normally Closed |
| P | Summary Alarm Common |
| R | Summary Alarm Normally Open |
| E | RS422/RS485 Data Out- |
| F | Signal Ground |
| C | RS422/RS485 Data In- |
| D | RS422/RS485 Data Out+, RS232 Data Out |
| B | RS422/RS485 Data In+, RS232 Data In |
| | |
| S,G | External 15 VDC Positive (option VO15) |
| H,J | External 15 VDC Ground (option VO15) **Tied to ground internally |
| | |

NOTE: Planning Ethernet Access

It is recommended that IP knowledgeable customer personnel be consulted as a resource in the installation and use of the Ethernet access features of the Cross Technologies product.

2.7 Installation/Operation

Installing and Operating the 4116-22-8085 Multi-Band, Block Translator

1. Connect -55 dBm to -35 dBm signals to CH1 and CH2 RF INPUTS (Figure 2.5).
2. Connect the RF OUTPUTS to the external equipment.
3. Using the pre-assembled AC power input cable (furnished), connect 100-240 \pm 10% VAC, 47 - 63 Hz to AC IN connector on the front panel.
4. If a custom length power cable must be made, refer to description below for connections*.
5. Be sure DS1 (green, DC Power) is on and DS2 (red, Alarm) is off (Figure 2.5).
6. Set the gain so that the output level is always within the range -20 to 0 dBm (See Table 2.0 and 2.5.1).
7. Select either INT (for internal 10 MHz ref), AUTO (for internal 10 MHz ref UNLESS an external 10 MHz, +2 to +8 dBm signal is connected to J2), or EXT (for external 10 MHz, +2 to +8 dBm ref. that is inserted at J2) via Ethernet or serial command (See Table 2.0 and 2.5.1).
8. Check that a 10 MHz, signal is present at the 10 MHz REF OUTPUT at the same level as the input, \pm 1.0 dB (J4 - Figure 2.5).
9. AC Fuse - The fuse is a 1.25" x 0.25" - 1.0 amp (slow blow) and is inserted in the fuse F1 position.

NOTE: If a fuse continues to open, the power supply is most likely defective.

CAUTION: When checking or replacing the fuse, do not over tighten the fuse holder cap.

This can displace the cap's O-ring and the weatherproof seal will be lost.

| 4116-22-8085 AC Power Input Connections | |
|---|--|
| Connector, Clipper Series, CL1M1102 and crimp pins | |
| Mating Connector, Clipper Series, CL1F1101 and crimp pins | |
| Pin | Input Connector Pin Description |
| 1 | 100-240 \pm 10% VAC, 47-63 Hz, 20 watts max. |
| 2 | Neutral |
| 3 | Ground |
| | |



6170 Shiloh Road
Alpharetta, Georgia 30005

(770) 886-8005
FAX (770) 886-7964
Toll Free 888-900-5588

WEB www.crosstechnologies.com
E-MAIL info@crosstechnologies.com

Printed in USA