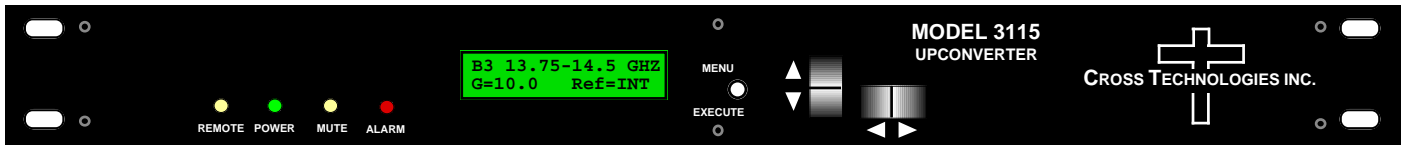


Instruction Manual

Model 3115-41-184 W60

Multi-Band Block Upconverter with W60 High Gain Option

November 2015, Rev. 0



Data, drawings, and other material contained herein are proprietary to Cross Technologies, Inc., but may be reproduced or duplicated without the prior permission of Cross Technologies, Inc. for purposes of operating the equipment.

When ordering parts from Cross Technologies, Inc., be sure to include the equipment model number, equipment serial number, and a description of the part.



6170 Shiloh Road
Alpharetta, Georgia 30005

(770) 886-8005
FAX (770) 886-7964
Toll Free 888-900-5588

WEB www.crosstechnologies.com
E-MAIL info@crosstechnologies.com

INSTRUCTION MANUAL

MODEL 3115-41-184 W60 Multi-Band Block Upconverter

<u>TABLE OF CONTENTS</u>	<u>PAGE</u>
Warranty	2
1.0 General	3
1.1 Equipment Description	3
1.2 Technical Characteristics	4
1.3 Monitor & Control Interface	6
2.0 Installation	8
2.1 Mechanical	8
2.2 Rear Panel Inputs & Outputs	9
2.3 Front Panel Controls & Indicators	10
2.4 Installation/Operation	11
2.5 Ethernet Interface Installation and Operation	12
2.5.1 Methods of Connection	12
2.5.2 Ethernet Configuration	12
2.5.3 Webpage M&C	13
2.5.4 SNMP Configuration	14
2.6 Menu Settings	17
3.0 Environmental Use Information	21

WARRANTY - The following warranty applies to all Cross Technologies, Inc. products.

All Cross Technologies, Inc. products are warranted against defective materials and workmanship for a period of one year after shipment to customer. Cross Technologies, Inc.'s obligation under this warranty is limited to repairing or, at Cross Technologies, Inc.'s option, replacing parts, subassemblies, or entire assemblies. Cross Technologies, Inc. shall not be liable for any special, indirect, or consequential damages. This warranty does not cover parts or equipment which have been subject to misuse, negligence, or accident by the customer during use. All shipping costs for warranty repairs will be prepaid by the customer. There are not other warranties, express or implied, except as stated herein.



6170 Shiloh Road
Alpharetta, Georgia 30005
(770) 886-8005 FAX (770) 886-7964
Toll Free (888) 900-5588
WEB www.crosstechnologies.com
E-MAIL info@crosstechnologies.com

MODEL 3115-41-184 W60

Multi-Band Block Upconverter with W60 High Gain Option

1.0 General

1.1 Equipment Description

The 3115-41-184 W60 Block Upconverter converts L-band to one of four RF bands. The L-band to RF gain is +40 dB, maximum (Option W60). Connectors are SMA female for the L-band (RF In), RF Out, and RF Monitor and BNC female for the external reference input and reference output. Front panel LEDs provide indication of Remote Operation, DC Power, Mute, and PLL Alarm. Gain, band select, and internal/external/Auto reference selection are controlled by front panel switches or remote selection (Ethernet M&C or via the RS-232C/485 Monitor and Control connector) and are viewable on the LCD Display. In AUTO, the 10 MHz reference stays in external if the external level is in the +2 to +8 dBm range. The 3115 is powered by a 100-240 \pm 10% VAC power supply, and housed in a 1RU rack mount chassis, 1.75" High X 19.0" Wide X 19.0" Deep.

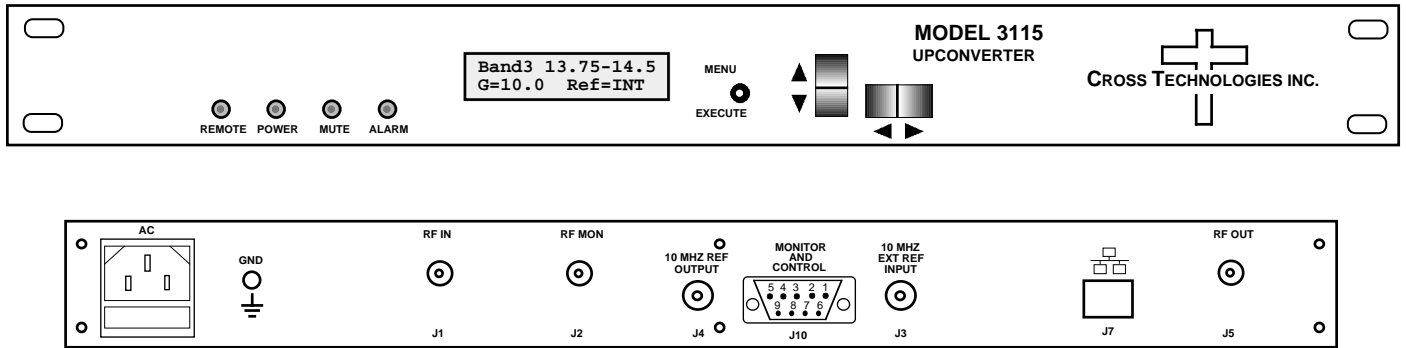


Figure 1. Model 3115-41-184 W60 Multi-Band Block Upconverter, Front & Rear Panels

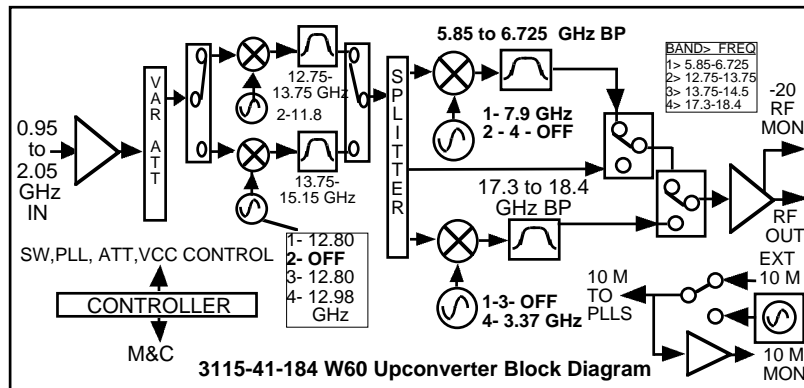


FIGURE 1.A Model 3115-41-184 W60 Block Diagram

1.2 Technical Characteristics

TABLE 1.0 3115-41-184 W60 Multi-Band Block Upconverter Specifications*					
Input Characteristics					
Input Impedance/Return Loss	50Ω/14 dB minimum				
Frequency Band 1, 2	0.95 - 1.825, 0.95 - 1.95 GHz				
Frequency Band 3, 4	0.95 - 1.700, 0.95 - 2.05 GHz				
Noise Figure, Maximum	20 dB at maximum gain				
Input Level Range	-55 to -35 dBm				
Non-damage input	0 dBm at maximum gain				
Output Characteristics					
Impedance/Return Loss	50Ω / 14 dB, Mute/Unmute				
Frequency Band 1, 2	5.85 - 6.725, 12.75 - 13.75 GHz				
Frequency Band 3, 4	13.75 - 14.5, 17.3 - 18.4 GHz				
Output Level Range	-10 to +5 dBm				
Output 1 dB Compression	+15 dBm at maximum gain				
Mute	> 60 dB from +5 dBm unmuted output (RF Monitor not muted)				
Channel Characteristics					
Gain at Fc, RF; RF Monitor	+40 ±3 dB maximum, (+40 to +10 dB variable in 0.5 ± 0.5 dB steps) RF Monitor -20 dBC of RF Out, ±3 dB				
Input to Output Isolation	> 45 dB, Minimum, at maximum gain and -35 dBm input				
Spurious, Inband	SIGNAL RELATED < -55 dBC in band, -10 to +5 dBm out; SIGNAL INDEPENDENT, < -55 dBm, at maximum gain				
Spurious, Out of Band	<-50 dBm spurious, signal independ. & signal dependen.; Fc ±1 GHz, at maximum gain				
Spurious, LO	< 45 dBm, at the output, at maximum gain				
Intermodulation	<-50 dBC for two carriers at 4 MHz spacing, each at +2 dBm out, at maximum gain				
Frequency Response	± 2 dB, over RF Band; ± 0.5 dB, 40 MHz BW				
Frequency Sense	Non-Inverting				
LO Characteristics					
LO Frequency	Band Specific				
Frequency Accuracy	± 0.05 ppm maximum over temp internal reference; external reference input				
10 MHz Level In/Monitor	Input = +2 to +8 dBm in; Monitor Output = Input Level ± 1.0 dB, 50 ohms				
Phase Noise @ Frequency	100 MHz	1 kHz	10 kHz	100 kHz	1 MHz
dBC/Hz	-70	-80	-85	-98	-110

Technical Characteristics continued on page 5...

1.2 Technical Characteristics continued from page 4...

Controls, Indicators	
Gain, Band, 10M Frequency	Direct readout LCD; Pushbutton Switches or via Ethernet M&C or Monitor and Control Connector.
PLL Alarm	Red LED; External Contact Closure
Remote	Yellow LED
Power	Green LED
Mute	Yellow LED
Other	
RF In/Out, Monitor Connector	SMA (female), 50Ω
10 MHz Connectors	BNC (female), 50Ω; works with 75Ω
Monitor/Control Connector	RS232C/485, DB9, Female; Ethernet, RJ45, Female, with Web Browser & SNMP User interfaces.
Size	1RU Rack Mount Chassis, 1.75" high x 19.0" wide x 19" Deep
Power	100-240 ±10% VAC, 47- 63 Hz, 25 watts maximum
*+10°C to +50°C Operating; -30°C to +60°C Non-Operating; 95% relative humidity, non-condensing; Specifications subject to change without notice.	

1.3 Monitor & Control Interface

The following tables summarize the commands and status queries applicable to the 3115-41-184 W60 Multi-Band Block Upconverter.

* **PLEASE NOTE:** The two character {aa} prefix, shown in the table below, is present ONLY when RS485 is selected.

Table 2.0 Model 3115-41-184 W60 M&C Commands

Table 2.0: Model 3115-41-184 W60 M&C Commands		
Command	Syntax	Description
Set Frequency Band	{aaCBx}	x = 1 to select band 1: in = (0.95 to 1.825 GHz) out = (5.85 to 6.725 GHz)
		x = 2 to select band 2: in = (0.95 to 1.95 GHz) out = (12.75 to 13.75 GHz)
		x = 3 to select band 3: in = (0.95 to 1.700 GHz) out = (13.75 to 14.5 GHz)
		x = 4 to select band 4: in = (0.95 to 2.05 GHz) out = (17.3 to 18.4 GHz)
Set Gain	{aaCGxxx}	where:
		xxx = 3 characters
		Range: +40 to +10 in 0.5 ± 0.5dB steps (e.g., +11 = 11.0 dB)
Set Mute	{aaCMx}	where:
		300 (30.0 dB) to 0 in 0.5 dB steps (e.g. 115 = 11.5 dB)
		x = 1 to mute the output
		x = 0 to unmute the output
Set External Reference	{aaCEx}	where:
		x = 1 to select internal reference
		x = 2 to select external reference
		x = 3 for auto-select
Set Reference Offset	{aaCOxxxxx}	where:
		-2000 ≤ xxxxx ≤ +2000

continued on page 7...

Table 2.0 Model 3115-41-184 W60 M&C Commands (continued)

Table 2.0: Model 3115-41-184 W60 M&C Commands (continued)		
Command	Syntax	Description
Frequency Band	{aaSB}	Returns {aaSBx} where:
		x = 1 if band is selected: in = (0.95 to 1.825 GHz) out = (5.85 to 6.725 GHz)
		x = 2 if band is selected: in = 0.95 to 1.95 GHz) out = (12.75 to 13.75 GHz)
		x = 3 if band is selected: in = (0.95 to 1.700 GHz) out = (13.75 to 14.5 GHz)
		x = 4 if band is selected: in = (0.95 to 2.05 GHz) out = (17.3 to 18.4 GHz)
Gain	{aaSG}	Returns {aaSGxxx} where:
		xxx = 3 characters
		Range: (300 to 0 dB variable in 0.5 dB steps)
		example: {SG115} for gain = 11.5 dB
10 MHz reference	{aaSE}	Returns {aaSEx} where:
		x = 1 if Internal 10 MHz reference is selected
		x = 2 if External 10 MHz reference is selected
		x = 3 if in auto-select mode
Unit Status	{aaSA}	Returns {aaSAwxyz} where:
		w = 0 if no summary alarm, w = 1 if summary alarm x = 0 if unit is using internal 10 MHz reference x = 1 if unit is using external reference y = 0 oven warm-up is off y = 1 oven warm-up is on z = 0 mute is off z = 1 mute is on
Reference Offset	{aaSO}	Returns {aaSOxxxxx} where:
		xxxxx is a signed number representing the reference offset value
Model and firmware revision	{aaSV}	returns {aaSVxxxxxxxxxyyy} where:
		xxxxxxxx = unit model number
		yyyy = unit firmware rev.

2.0 Installation

2.1 Mechanical - The 3115-41-184 W60 Multi-Band Block Upconverter consists of a controller board and RF plate assembly. A switching ± 12 , +24, +5 VDC power supply provides power for the assemblies. The 3115-41-184 W60 can be secured to a rack using the 4 holes on the front panel. Figure 2.0 shows how the 3115-41-184 W60 is assembled.

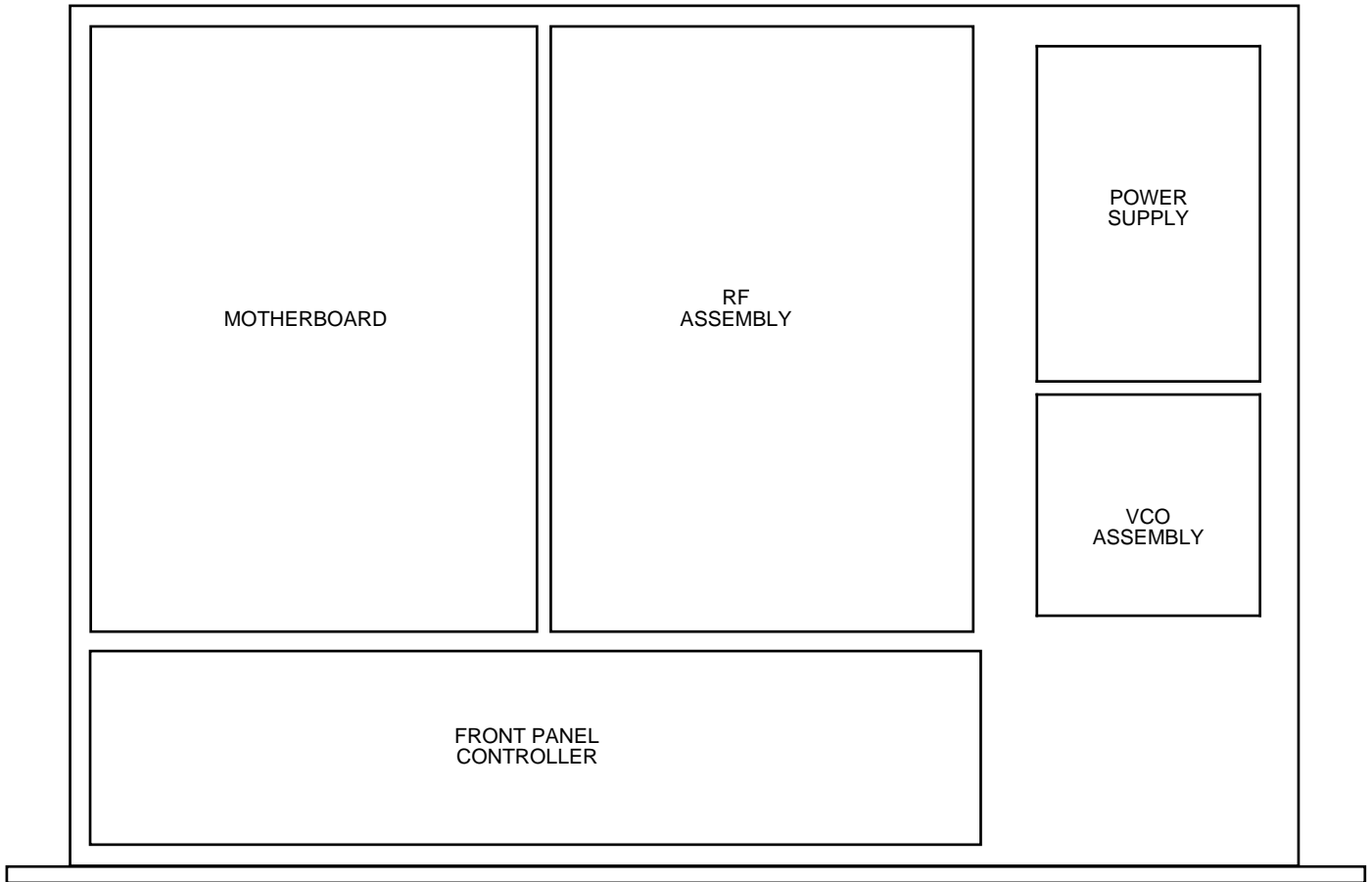


FIGURE 2.0 3115-41-184 Mechanical Assembly

2.2 Rear Panel Input / Output Signals - Figure 2.2 shows the input and output connectors on the rear panel.

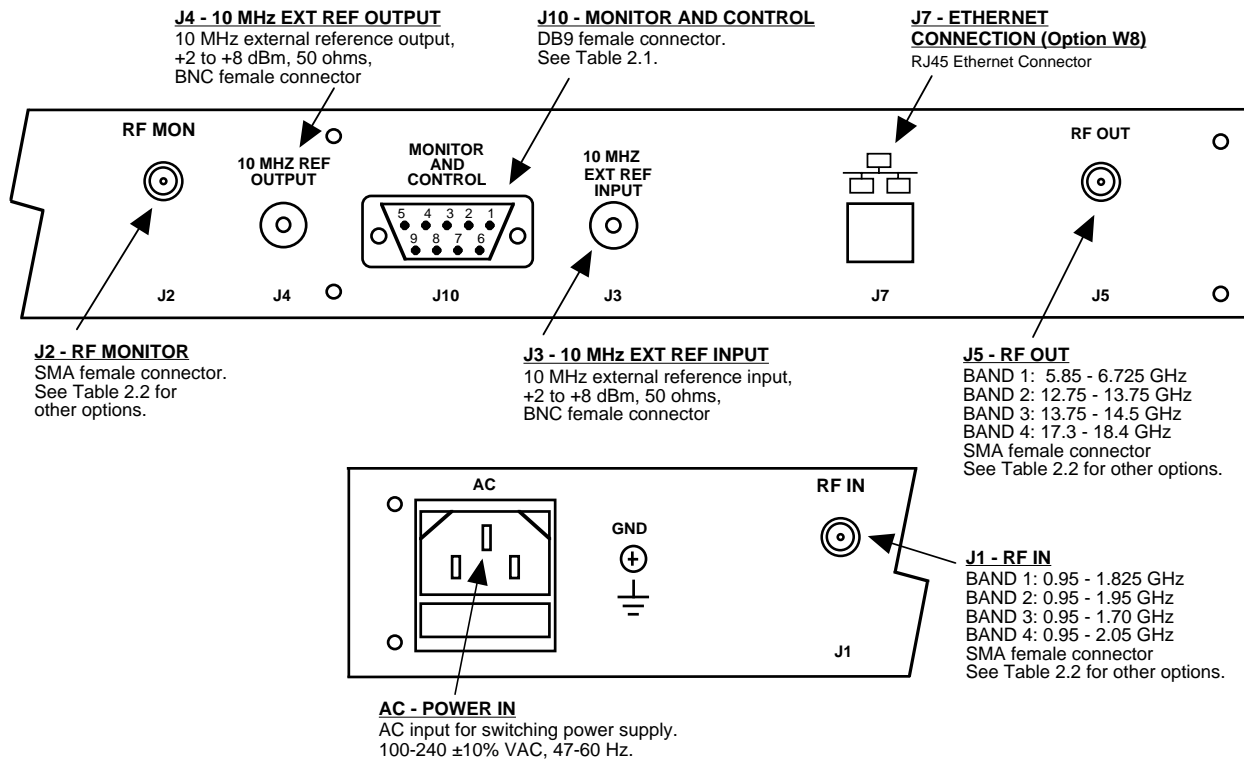


FIGURE 2.2 3115-41-184 W60 Rear Panel Inputs and Outputs

TABLE 2.1 J10 Pinouts (RS-232C/422/485*)	
Pin	Function
1	Rx-
2	Rx+ (RS-232C)
3	Tx+ (RS-232C)
4	Tx-
5	GND
6	Alarm Relay: Common
7	Alarm Relay: Normally Open
8	Not Used
9	Alarm Relay: Normally Closed

TABLE 2.2 IF/RF Connector Options		
Option	IF	RF
STD	BNC, 50Ω	Type N, 50Ω
-S	BNC, 50Ω	SMA, 50Ω
-N	BNC, 75Ω	Type N, 50Ω

*Interface: DB-9 Female
Protocol: RS485, RS422, or RS232C (selectable),
9600 baud rate, no parity, 8 data bits, 1 start bit, 1 stop bit

2.3 Front Panel Controls and Indicators -

Figure 2.3 shows the front panel controls and indicators.

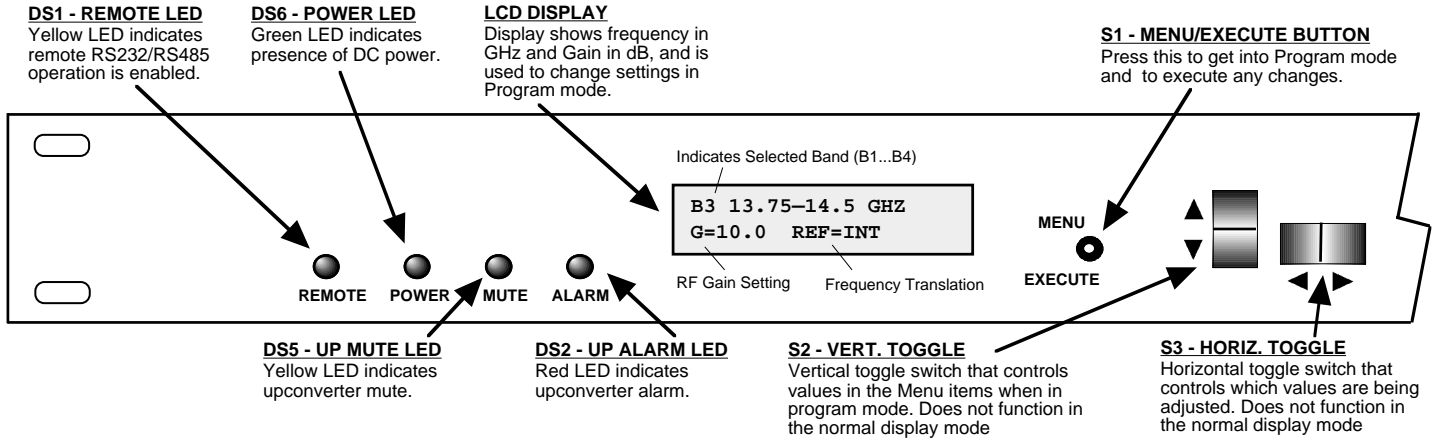


FIGURE 2.3 3115-41-184 W60 Front Panel Controls and Indicators

2.4 Installation/Operation

Installing and Operating the 3115-41-184 W60 Multi-Band Block Upconverter:

1. Connect a -55 dBm to -35 dBm signal to RF-BAND INPUT (J1) Figure 2.2.
2. Connect the RF OUTPUT (J5), to the external equipment.
3. Connect 100-240 \pm 10% VAC, 47 - 63 Hz to AC connector to the front panel.
4. Be sure DS6 (green, DC Power) is on and DS2 (red, Alarm) is off (Figure 2.3).
5. Set the gain so that the output level is always within the range of -10 to +5 dBm (See Table 1.0).
6. Select either INT (for internal 10 MHz ref), or EXT (for external 10 MHz, +2 to +8 dBm reference that is inserted at J3, or AUTO reference mode).
7. AC Fuse - The fuse is a 1A/250V 1.25" x .25" (slow blow) and is inserted in the fuse F1 position.

NOTE: If a fuse continues to open, the power supply is most likely defective.

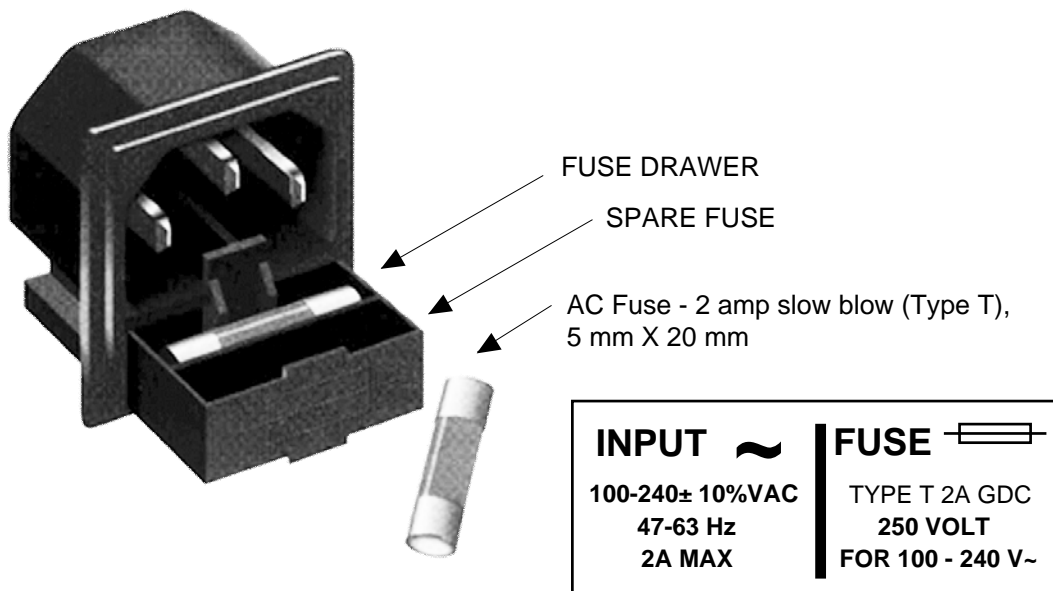


FIGURE 2.4 Fuse Location and Spare Fuse

2.5 ETHERNET Interface Installation and Operation

The 3115-41-184 W60 Multi-Band Block Upconverter is equipped with a 10/100 Base-T compatible Ethernet interface for control and monitoring of its operating parameters. An HTML script interface allows the user to monitor and control the converter using a standard web browser. SNMP (Simple Network Management Protocol) is also supported. Contact Cross Technologies for the SNMP MIB file.

2.5.1 Methods of Connection

Directly Connected to a PC:

For control from a local PC, attach the 3115-41-184 W60's Ethernet port to the Ethernet network connector on the PC using a crossover RJ-45 cable.

LAN Connection

For LAN connections, attach the 3115-41-184 W60 Ethernet port to the LAN using a normal RJ-45 cable. Use any PC on the LAN to connect to the 3115-41-184 W60.

2.5.2 Ethernet Configuration

Each 3115-41-184 W60 must be configured with an appropriate IP address, Netmask, and Gateway assigned by your network manager. The 3115-41-184 W60 is preset at the factory with a static address that is briefly displayed on the LCD Display during Power On Sequence (192.168.123.2 is the default). The device server in the 3115-41-184 W60 has a built in http based configuration manager that is used to configure network settings. To access the configuration manager open a web browser and enter the IP address of the 3116-T31-148 in the browser's address field. The window shown in Figure 2-A will appear. As delivered, there is no password set. Choose your user name and password here or leave those fields blank and click OK to proceed to the configuration manager webpage.

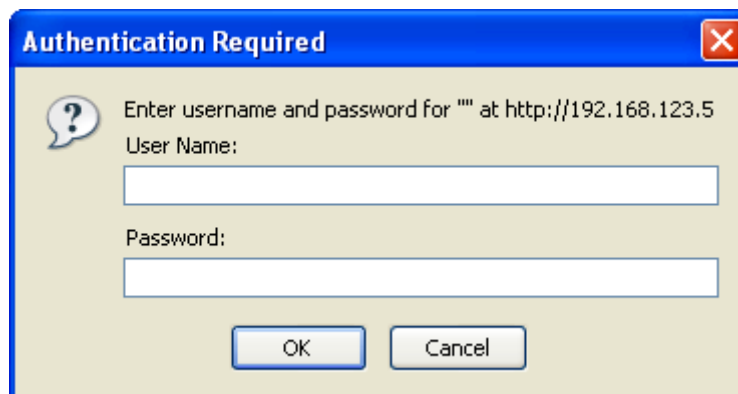


Figure 2-A: Password Screen

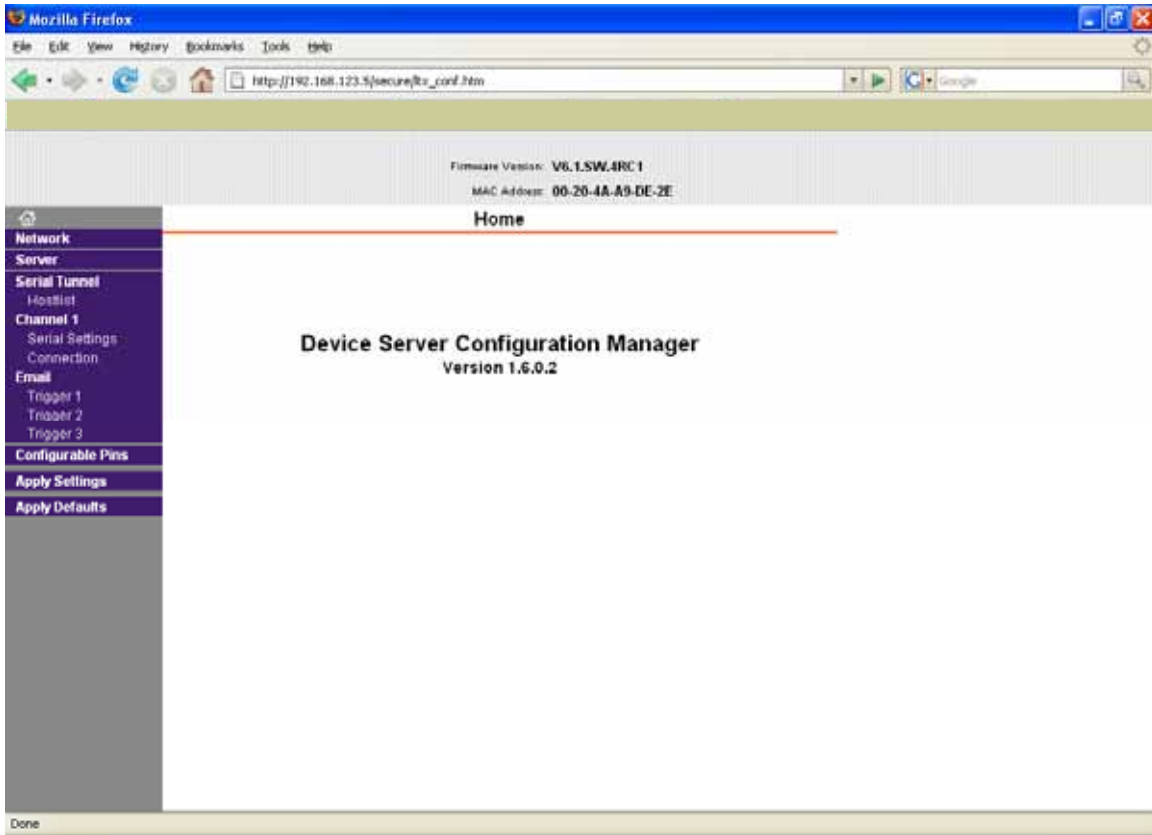


Figure 2-B: Configuration Manager Screen

In the left frame of the configuration manager click on Network to display the Network Settings screen. Enter the IP address, Subnet mask, and Gateway address with delimiter dots (example: 192.168.192.47).

2.5.3 Webpage M & C

Enter the following address in a web browser to access the M&C Webpage:
<http://<ip address of 41xx>/serial/0/setup.htm> where <ip address> is the IP address of the unit.

Figure 2-C (PG-14) shows the Product Setup Web Page for model 3115-41-184 Block Upconverter.

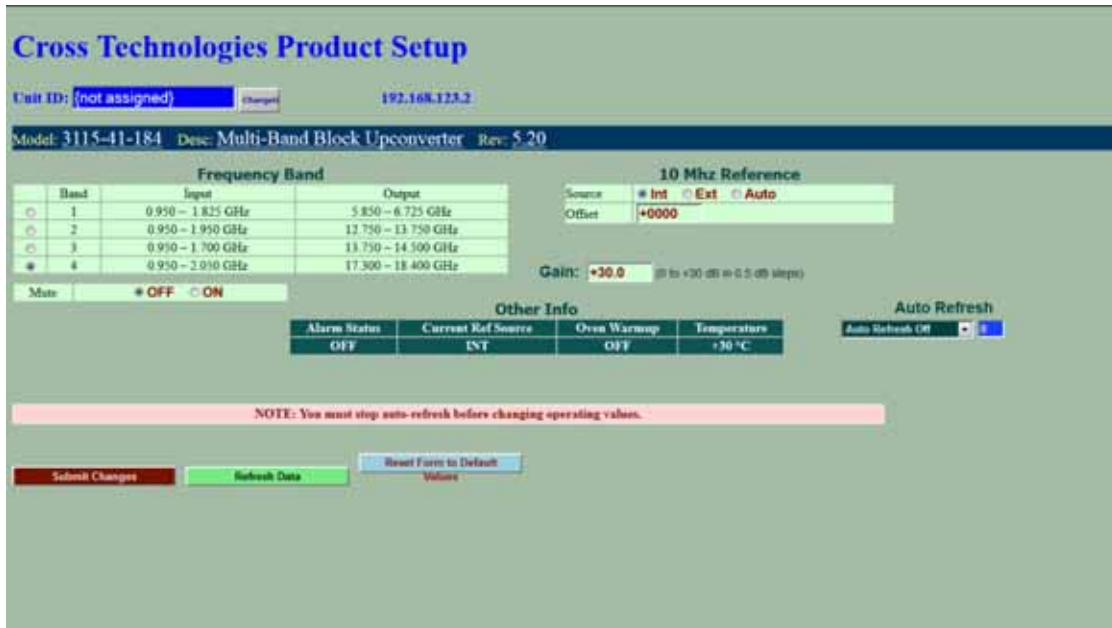


Figure 2-C: Model 3115-41-184 W60 Product Setup Web Page

2.5.4 SNMP Configuration

Setting of SNMP parameters such as Community Write and Community Read strings requires a *Telnet*[®] connection to port 9999. The following instructions explain how to establish such a *Telnet*[®] connection using Windows XP's Hyper Terminal utility.

Start the Hyper Terminal application and select “New Connection” from the “File” drop down menu.

The next screen is a “Connect To” dialog box. Select TCP/IP (Winsock) from the “Connect” drop down menu.

Enter the IP address of the 3115-41-184 W30 in the “Host address:” field and 9999 in the “Port number” field.

Figure 2-D shows an example of the Hyper Terminal settings required to access the SNMP configuration menu.

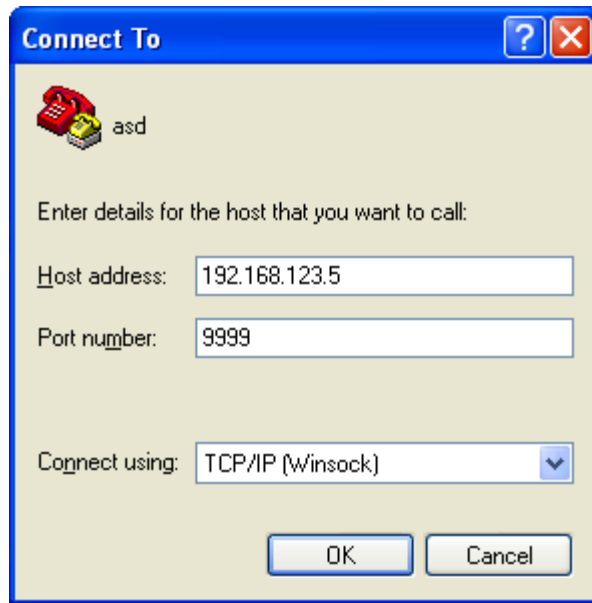


Figure 2-D: Telnet Settings in Hyper Terminal

Once the *Telnet*[®] connection is established you will be prompted to “Press Enter for Setup Mode”. Press enter and a menu of device server configuration options will appear (see Figure 2-F). Select menu item 3, “SNMP configuration.” You will be prompted to enter SNMP community read and write strings. After setting your desired community strings you will be prompted to “Enter IP addresses for SNMP traps.” You must enter at least one and up to four IP addresses of SNMP managers that will access the unit. This is required even though SNMP traps are not implemented. The unit will not process SNMP SET and GET requests from an SNMP manager unless the IP address associated with that manager is entered in the device server.

Figure 2-E: Device Server Configuration Menu

```
xport_telnet_setup - HyperTerminal
File Edit View Call Transfer Help

Enhanced Password is disabled

***** Channel 1 *****
Baudrate 38400, I/F Mode 4C, Flow 00
CPU performance : Standard
Web RAM size 01000

***** SNMP Configuration *****
SNMP community name for read: public
SNMP community name for write: public
Trap IP addresses:
1: 192.168.123.1
2: 0.0.0.0
3: 0.0.0.0

Change Setup:
0 Server configuration
1 Channel 1 configuration
3 SNMP configuration
6 Security
7 factory defaults
8 exit without save
9 save and exit

Your choice ?

Connected 0:00:20 ANSIW TCP/IP SCROLL CAPS NUM Capture Print
```


2.6 Menu Settings

2.6.1 Functions - This section describes operation of the front panel controls. There are three operator switches, the LCD display and alarm indicator LEDs. All functions for the equipment are controlled by these components. The functions are (see Figure 2.3):

Power Up

Normal Display

Menu 1	Frequency Band (1 to 4)
Menu 2	Gain in dB (+40 to +10 dB in 0.5 ± 0.5 dB steps)
Menu 3	Mute TX Signal
Menu 4	Select 10 MHz Reference (Internal, External, Auto)
Menu 5	Set Reference Frequency Offset
Menu 6	Set Remote on/off
Menu 7	Set Secondary Communications Interface
Menu 8	Set RS485 Address
Menu 9	Display Interior Temperature
Save Menu	When “R” is selected in any of the above menus or when operator reaches the end.

Alarm indications appear on the LEDs (See figure 2.3).

All program changes must start with the operation of the Menu/Execute switch and must also end with the operation of the Menu/Execute switch verified by the “Save Settings?” Menu. If this sequence is not followed, none of the changes will take effect. If programming is initiated and no operator action takes place for approximately 30 seconds, (before the final press of the Menu/Execute switch), the display will revert to its previous status and you will need to start over.

2.6.2. Power On Settings

NOTE: The last status of a unit is retained even when power is removed.

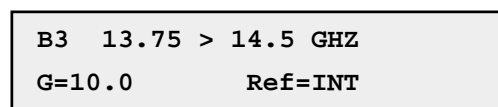
When power is restored, the unit will return to its previous settings.

When power is first applied, the LCD display goes through three steps.

1. The LCD goes black to show all segments are functioning.
2. The software version will be displayed.



3. The present band, gain, 10 MHz reference and output frequency range are shown.



The unit is now operational and ready for any changes the operator may desire.

2.6.3 Control Switches

1. Menu/Execute - Any change to the programming of the unit must be initiated by pressing the Menu/Execute switch and completed by pressing the Menu/Execute switch.
2. Horizontal Switch - This switch is mounted so its movement is horizontal and moves the cursor left or right.
3. Vertical Switch - This switch is mounted so its movement is vertical and has two functions:
 - A. During frequency, gain changes, the vertical movement will raise or lower the number in the direction of the arrows.
 - B. For other functions such as Mute on/off, the vertical switch will alternately turn the function on or off regardless of the direction operated.

2.6.4 Band Changes

At any time during the modification process, if you have made a mistake and do not wish to save the changes you have made, **do not press the Menu/Execute switch**; simply do nothing for approximately 30 seconds, and the system will return to the normal operating mode or scroll to “**R**” and push the menu/Execute switch and select “**NO**” in the “**SAVE SETTINGS?**” window.

To change the BAND:

Operate the Menu/Execute switch until you get to the menu item you want to change see Figure 2.5 for the sequence of menu options. The following display is for changing the upconverter’s frequency load:

```
BAND = 3
```

Pressing the Up/Down switch down will select available frequency bands.

NOTE: CHANGES DO NOT TAKE PLACE ON BAND UNTIL YOU GO TO THE SAVE MENU AND INDICATE YOU WANT TO SAVE THE CHANGES.

When the display indicates the value desired you can push the Menu/Execute switch to the next item:

```
GAIN = +20.0      R
```

OR you can scroll to “R”, push the Menu/Execute switch to get to:

```
SAVE SETTINGS?  Y N
```

Selecting **Y** will save the new settings. Selecting **N** will revert to the previous settings.

Pushing the Menu/Execute switch then takes you to the default display:

```
B3 13.75 > 14.5 GHZ
G=10.0      Ref=INT
```

Figure 2.5 gives the menu items and how to make changes.

2.6.5 Gain Changes

When you get to this menu note that the gain changes will be made as you make them but if you do not wish to save the changes you have made, scroll to “**R**” and push the menu/Execute switch and select “**NO**” in the “**SAVE SETTINGS?**” window or **do not press the Menu/Execute switch**; simply do nothing for approximately 30 seconds and the system will return to the normal operating mode.

NOTE: CHANGES TAKE PLACE ON LEVEL AND GAIN IMMEDIATELY BUT DO NOT GET SAVED UNTIL YOU GO TO THE SAVE MENU AND INDICATE YOU WANT TO SAVE THE CHANGES.

Press the Up/Down switch to change the level in 1 dB steps and then push the Menu/Execute switch to get to the Gain setting:

```
GAIN = +20.0      R
```

Press the Up/Down switch to change the gain in 1 or 10 dB steps:

```
GAIN = +21.0      R
```

By using the horizontal rocker switch the cursor can be moved left or right. Pressing the Up/Down switch down will toggle the display digit selected until you have the desired gain.

When the display indicates the value desired you can push the Menu/Execute switch to the next item OR you can scroll to “**R**”, push the Menu/Execute switch to get to:

```
SAVE SETTINGS?   Y N
```

Selecting **Y** will save the new settings. Selecting **N** will revert to the previous settings.

Pushing the Menu/Execute switch then takes you to:

```
B3  13.75 > 14.5 GHZ
G=10.0      Ref=INT
```

Figure 2.5 gives the menu items and how to make changes.

2.6.6 Alarm Indications

An alarm condition will occur if the local oscillator phase lock loop (PLL) comes out of lock. The Mute LED will light if you select to mute the Tx Signal and the Remote LED will light when you select the Remote mode.

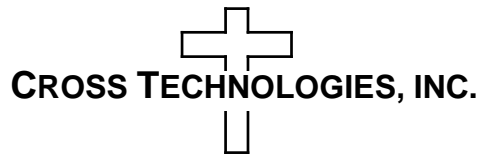
Figure 2.5 gives the menu items and how to make changes.

Power Up	ON POWER UP Rev. 4.0		
Normal Display	NORMAL DISPLAY B3 13.75 > 14.5 GHZ G=10.0 Ref=INT		PUSH BUTTON
Menu 1 Set Band	PUSHING MENU/EXECUTE SEQUENCE BAND = 3 R	SCROLL <> SCROLL ↕	PUSH BUTTON
Menu 2 Set Gain (+30 to 0 dB)	G = +20.0 R	SCROLL <> SCROLL ↕	PUSH BUTTON
Menu 3 Mute TX signal	MUTE OFF R	SCROLL <> SCROLL ↕	PUSH BUTTON
Menu 4 Select 10 MHz Reference Mode (Internal, External, Auto)	REF MODE = INT R	SCROLL <> SCROLL ↕	PUSH BUTTON
Menu 5 Reference Frequency Offset	REF OS = +0000 R	SCROLL <> SCROLL ↕	PUSH BUTTON
Menu 6 Set Remote	REMOTE = ON R	SCROLL <> SCROLL ↕	PUSH BUTTON
Menu 7 Select Secondary Communications Interface	COMM INTERFACE R RS232	SCROLL <> SCROLL ↕	PUSH BUTTON
Menu 8 Set RS485 Address	RS485 ADDRESS = 00 R	SCROLL <> SCROLL ↕	PUSH BUTTON
Menu 9 Interior Temperature	TEMP = +30C R	SCROLL <>	PUSH BUTTON
Save Settings? At the end or when "R" is selected from any of the above menus	SAVE SETTINGS? Y N		

FIGURE 2.5 Menu Display and Sequence

3.0 Environmental Use Information

- A. **Rack-Mounting** - To mount this equipment in a rack, please refer to the installation instructions located in the user manual furnished by the manufacturer of your equipment rack.
- B. **Mechanical Loading** - Mounting of equipment in a rack should be such that a hazardous condition does not exist due to uneven weight distribution.
- C. **Elevated Operating Ambient Temperature** - If installed in a closed or multiunit rack assembly, the operating ambient temperature of the rack may be greater than room ambient temperature. Therefore, consideration should be given to Tmra (Maximum Recommended Ambient Temperature).
- D. **Reduced Air Flow** - Installation of the equipment in a rack should be such that the amount of air flow required for safe operation of the equipment is not compromised. Additional space between units may be required.
- E. **Circuit Overloading** - Consideration should be given to the connection of the equipment to the supply circuit and the effect that overloading of circuits could have on over current protection and supply wiring. Appropriate consideration of equipment name plate rating should be used when addressing this concern.
- F. **Reliable Earthing** - Reliable earthing of rack-mounted equipment should be maintained. Particular attention should be given to supply connections other than direct connection to the Branch (use of power strips).
- G. **Top Cover** - There are no serviceable parts inside the product so, the Top Cover should not be removed. If the Top Cover is removed the ground strap and associated screw **MUST BE REINSTALLED** prior to Top Cover screw replacement. **FAILURE TO DO** this may cause **INGRESS** and/or **EGRESS** emission problems.



6170 Shiloh Road
Alpharetta, Georgia 30005

(770) 886-8005
FAX (770) 886-7964
Toll Free 888-900-5588

WEB: www.crosstechnologies.com
E-MAIL: info@crosstechnologies.com

Printed in USA